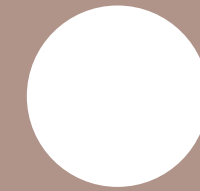




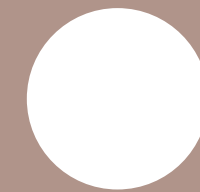
flow



bbf:



find your perfect flow



:flow

:flow — is a vibrant, long-awaited urban project in the heart of Limassol

where families can find their homes and working professionals their ideal office spaces, all in one too many spaces. commercial and residential mix complex is tailored for innovation, growth and quality living.



smart investment solutions with bbf:

enjoy a diverse choice of shopping opportunities, health centers, close proximity to all the amenities, banks, schools, supermarkets, green areas and so much more. this co-working project, as the future of real estate, available for a try-out from bbf:



major benefits

- exclusive "live and work" project with offices and luxury apartments in one cozy establishment
- 900 meters away from the beach
- posh and convenient location in the center of Limassol, alongside with major business streets with the best shops, restaurants, schools, city parks and cultural sites within a stroll
- one of the most dynamic areas of the city
- 2-floor retail spaces in the commercial building

- supermarkets, private clinics, fashion boutiques, home supplies stores and various leisure activities at your doorstep
- residence facilities include gym, yoga room, spa and saunas, a beauty room, kids area and a playground, laundry room, media room, gaming room, 3 lobby's and a business lounge
- easy accessibility to the city, the highway and the seaside
- private parking



• introduction

you are my heart – Limassol. a one-of-a-kind dreamy place, combining a business hub environment, full of opportunities and a comfort of a first-class

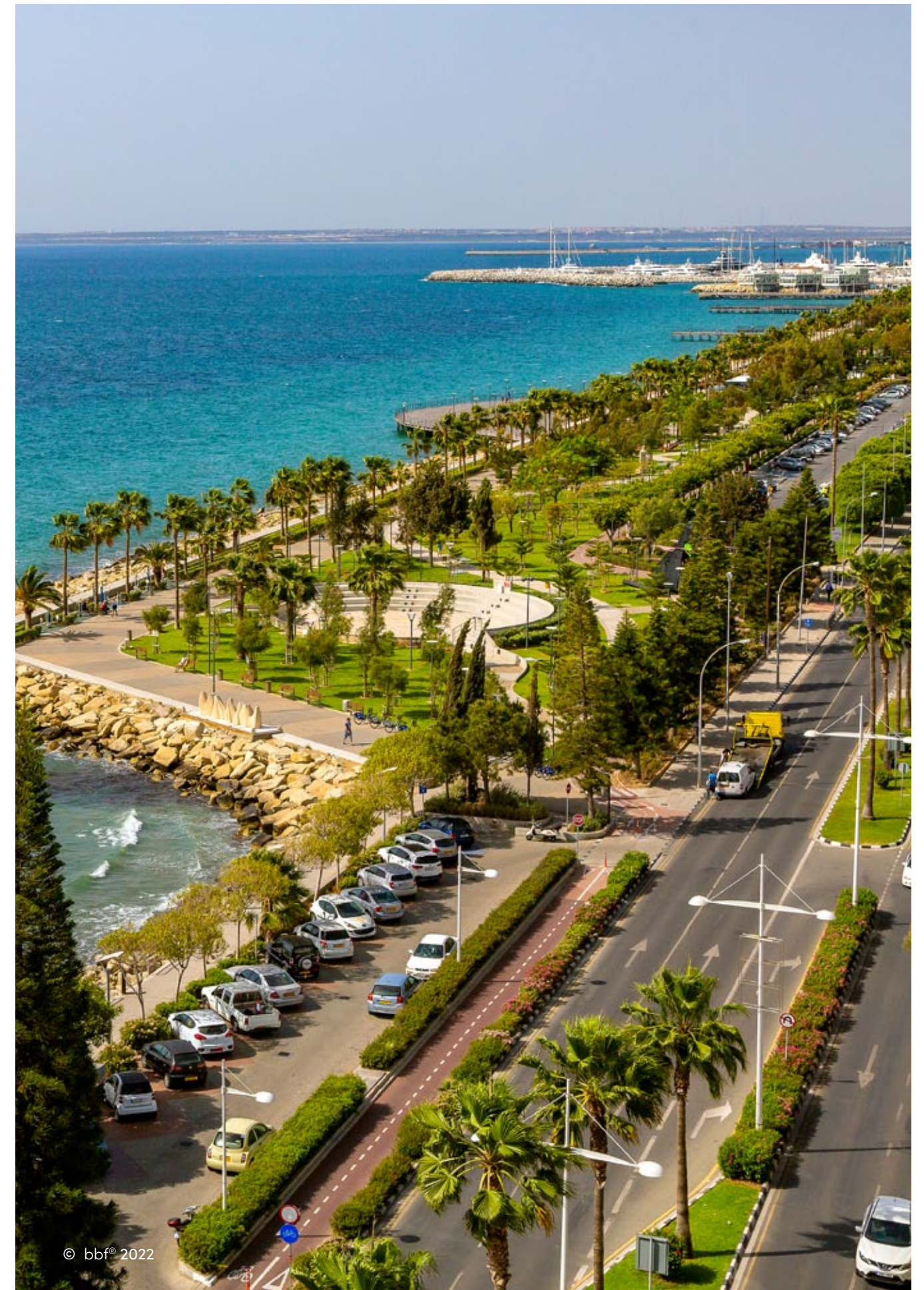
the largest city in Cyprus with a population of 280,000 people, is located on the Southern coast of the island.

Limassol encompasses a great number of historical landmarks, such as an Ancient City Kourion, with its breathtaking white stones and lovely beaches; medieval Limassol Castle, the Old Port and OldTown, full of scenic views.

A beautiful island, with its center in Limassol, where there are no bad days, only maximum of joy, surrounded by the happiest people. Best education to invest to on behalf of your children, where they can study, being surrounded by the turquoise waters and Mediterranean resort facilities, and for yourself – career opportunities at any global headquarters without the need to learn a third language.

Studying and working at the Subtropics - is uniting with your family for a glass of freshly squeezed orange juice, sipping on it while enjoying a delicious platter of prawns and kalamari rings at any local seaside bar.

You dreamt of a paradise life – and you just found it. bbf: is here to make is even dreamier.



© bbf® 2022

introduction

high-quality living. enjoying life with an endless summer. a dream of millions. 6 letters – infinite happiness. Cyprus – let's explore together.

* * *

*The land of oldest wine, the land of cats, who saved this island once;
The land of dreams, the land of heights.
Where steep mountains meet the crystal clear waters,
Is where you'd want to be, have visited the stunning Cyprus once.
To introduce this hidden gem to you, let's take a little tour:
For education, job perspectives by the shore –
Limassol would be the one for you.
If you prefer a business hub – the capital is calling for your overview.
To spend your days away from any worries –
the scenic views of Paphos are on cue.
Yet, for a blend of all entices – Larnaca might be your true venue.*

* * *

Cyprus inspires, facilitates the perfect environment for your growth and future. After gaining independence from the UK in 1960, Cyprus has focused on trade and development, resulting into them achieving the highest standard of living among almost all neighboring countries. The agricultural sector has expanded, exports tripled and tourism began to account for the biggest foreign exchange index. Since then, the local economy has flourished, and today, Cyprus has one of the lowest crime rates (of 1 in 100 000 people), low unemployment rate and high GDP per capita (about \$50.000 PPP).

Primarily Christian Orthodox, the Greek Cypriots have a few religious landmarks, such as the Kykkos monastery, that is a place of power for the local and tourists. However, the island facilitates people of other religions and beliefs, having Synagogues, Mosques and Russian Churches. Cyprus is at the crossroads of religion, language and geography. Start exploring Cyprus with bbf:.



location

welcome to the vibrant urban project in Agios Nicolaos

in the very heart of the city, in Agios Nicolaos, you may find a stunning complex of 4 residential and 1 commercial buildings. next to the Griva Digeni street, which is the center of retail, business, health and proximity to all the necessary amenities. an envious place to work and live at – close walking proximity to some of Limassol’s finest bars and restaurants, 15-minute drive to Molos park and the Old Town. a 25-minute walk to the eucalyptus Dasoudi park and the Tourist Area. a perfect balance between a dynamic working environment and the walking distance to all the finest entertainment.



location & accessibility

- schools in the neighborhood: Agios Nikolaos Elementary school, Pascal school and Agios Nikolaos Lyceum.
- 2 nurseries around the corner
- actors school, dance studios and other activities around the corner
- dental and medical clinics in a walking distance
- hair studios, beauty salons around the complex
- gyms, spa's and sports amenities
- the biggest supermarket of the city in a 2-minute drive
- laundry and dry-cleaning services
- a wide choice of cafes, restaurants, bars of a diverse pool of cultures
- 3 hospitals within a 20-minute reach

- equally easy access to A1 Highway and the seaside
- in the heart of the most central location of the city
- 3 private English Schools within a 15-minute drive – Grammar School, Grammar School Junior and Foley's
- less than 15-minutes away from the Historical Old Town of Limassol, Marina and Lady's Mile beach
- 20-minute drive to MyMall
- 20-minute walk to Molos skate park
- 25-minute walk to Dasoudi park
- 40-minute drive to Larnaca Airport
- 45-minute drive to Paphos Airport
- 50-minute drive to Troodos Mountains



• architectural description

enjoy the world of luxury apartments and sophisticated office spaces in the center of Limassol

4 gorgeous residential buildings and 1 commercial building, situated in one of the best areas of the city. Agios Nikolaos is located in the area full of various amenities, necessary for quality happy living. this mix-use development creates a sense of a small town within a town in the middle of a thriving hub.



many fascinating amenities, such as a beauty salon and a spa zone, luxurious lobby's, co-working rooftop and so much more

the reinforced concrete foundation of each blocks is made with the close accordance to the European standard, protecting it from any external natural or time damages. the external brick walls are covered with thermal insulation, while the internal walls are equipped with dry-wall system for maximum comfort all-year long.



• exterior



• project in numbers – residential

- 1 playground
- 1 spa & sauna room
- 5 floors per block
- 1 media room
- 1 swimming pool

- 1 kids area
- 1 beauty room
- 4 blocks
- 4 lobby's
- 1 gym & yoga room

- 1 laundry room
- 3.15m height ceilings
- 1 co-working space
- 120 private parking spaces

- 52 to 156 sq.m apartment area including verandas
- 3 private English schools within a 15-minute drive



📍 project in numbers – commercial

- 1 common roof for offices 601 and 602
- 6 floors per building

- 1 building
- 3 shops
- 12 offices

- 3.15m height ceilings
- 69 private parking units

- 377 to 412 sq.m. offices including verandas



choice of properties

residential – block a,b

FLOOR	UNIT NO	PROPERTY TYPE	BED-ROOMS	BATH-ROOMS	PARK SPACES	INDOOR AREA M ²	COV. VERANDA M ²	UNCOV. VERANDA M ²	STO-RAGE M ²	TOTAL AREA M ²
BLOCK A										
1st	101	Apartment	2	2	1	90.69	24.14	5.87	12.30	133.00
	102	Apartment	1	1	1	55.18	23.76		3.40	82.34
	103	Apartment	1	1	1	55.11	23.76		11.25	90.12
	104	Apartment	2	2	1	90.80	24.56	9.41	6.90	131.67
	105	Apartment	2	2	1	89.76	25.77		5.40	120.93
	106	Apartment	1	1	1	57.55	26.76		5.40	89.71
2nd	201	Apartment	2	2	1	90.69	23.05		9.10	122.84
	202	Apartment	1	1	1	55.18	19.10		6.00	80.28
	203	Apartment	1	1	1	55.11	19.10		5.55	79.76
	204	Apartment	2	2	1	90.80	23.91		6.75	121.46
	205	Apartment	2	2	1	89.76	26.15		7.00	122.91
	206	Apartment	1	1	1	57.55	17.42		4.30	79.27
3rd	301	Apartment	2	2	1	90.69	22.56		5.40	118.65
	302	Apartment	1	1	1	55.18	19.10		5.40	79.68
	303	Apartment	1	1	1	55.11	19.10		5.40	79.61
	304	Apartment	2	2	1	90.80	23.91		5.10	119.81
	305	Apartment	2	2	1	89.76	26.15		5.10	121.01
	306	Apartment	1	1	1	57.55	17.42		5.10	80.07
4th	401	Apartment	2	2	1	90.69	22.56		5.10	118.35
	402	Apartment	1	1	1	55.18	19.10		5.00	79.28
	403	Apartment	1	1	1	55.11	19.10		5.00	79.21
	404	Apartment	2	2	1	90.80	23.91		5.00	119.71
	405	Apartment	2	2	1	89.76	26.15		5.00	120.91
	406	Apartment	1	1	1	57.55	17.42		5.00	79.97
5th	501	Apartment	2	2	1	90.69	22.56		9.20	122.45
	502	Apartment	1	1	1	55.18	19.10		5.25	79.53
	503	Apartment	1	1	1	55.11	19.10		5.00	79.21
	504	Apartment	2	2	1	90.80	23.91		5.50	120.21
	505	Apartment	2	2	1	89.76	26.15		5.50	121.41
	506	Apartment	1	1	1	57.55	17.42		4.20	79.17

FLOOR	UNIT NO	PROPERTY TYPE	BED-ROOMS	BATH-ROOMS	PARK SPACES	INDOOR AREA M ²	COV. VERANDA M ²	UNCOV. VERANDA M ²	STO-RAGE M ²	TOTAL AREA M ²
BLOCK B										
1st	101	Apartment	1	1	1	60.80	17.83		5.00	83.63
	102	Apartment	3	3	1	120.10	36.30	11.84	5.00	173.24
	103	Apartment	1	1	1	55.62	19.93	9.05	5.00	89.60
	104	Studio	1	1	1	37.80	14.65		5.15	57.60
	105	Apartment	2	2	1	90.98	26.65	8.83	5.80	132.26
	106	Apartment	3	3	1	119.00	31.05		5.00	155.05
2nd	201	Apartment	1	1	1	60.80	17.83		5.30	83.93
	202	Apartment	3	3	1	120.10	36.30		4.20	160.60
	203	Apartment	1	1	1	55.62	19.93		5.40	80.95
	204	Studio	1	1	1	37.80	14.65		4.20	56.65
	205	Apartment	2	2	1	90.98	26.65		5.40	123.03
	206	Apartment	3	3	1	119.00	31.05		4.20	154.25
3rd	301	Apartment	1	1	1	60.80	17.83		5.10	83.73
	302	Apartment	3	3	1	120.10	36.30		4.30	160.70
	303	Apartment	1	1	1	55.62	19.93		5.00	80.55
	304	Studio	1	1	1	37.80	14.65		5.10	57.55
	305	Apartment	2	2	1	91.30	26.65		5.00	122.95
	306	Apartment	3	3	1	119.26	31.05		5.00	155.31
4th	401	Apartment	1	1	1	60.80	17.67		5.10	83.57
	402	Apartment	3	3	1	119.00	36.15		14.00	169.15
	403	Apartment	1	1	1	55.62	19.93		5.00	80.55
	404	Studio	1	1	1	37.80	14.65		5.00	57.45
	405	Apartment	2	2	1	90.80	26.65		5.00	122.45
	406	Apartment	3	3	1	119.26	31.05		7.80	158.11
5th	501	Apartment	1	1	1	60.80	17.83		5.00	83.63
	502	Apartment	3	3	1	120.10	36.30		5.50	161.90
	503	Apartment	1	1	1	55.62	19.93		5.00	80.55
	504	Studio	1	1	1	37.80	14.65		5.10	57.55
	505	Apartment	2	2	1	90.98	26.65		5.10	122.73
	506	Apartment	3	3	1	119.00	31.05		5.10	155.15



NOTE: the areas stated above may slightly differ upon issuance of relevant authority permits

*All 3D images and photographs consist of indicative information and the project can differ insignificantly from the displayed images. Furniture and interior items are extras.

choice of properties

residential – block c,d

FLOOR	UNIT NO	PROPERTY TYPE	BED-ROOMS	BATH-ROOMS	PARK SPACES	INDOOR AREA M ²	COV. VERANDA M ²	UNCOV. VERANDA M ²	STO-RAGE M ²	TOTAL AREA M ²
BLOCK C										
1st	101	Apartment	1	1	1	60.81	17.84	5.87	5.00	83.65
	102	Apartment	3	3	1	120.10	36.28		4.85	173.07
	103	Apartment	1	1	1	55.49	20.40		4.90	89.84
	104	Studio	1	1	1	37.67	14.65	9.41	5.00	57.32
	105	Apartment	2	2	1	90.88	27.11		5.00	131.82
	106	Apartment	3	3	1	118.80	31.20		5.00	155.00
2nd	201	Apartment	1	1	1	60.81	17.07		4.90	82.78
	202	Apartment	3	3	1	120.10	36.28		5.00	161.38
	203	Apartment	1	1	1	55.49	20.40		5.00	80.89
	204	Studio	1	1	1	37.67	14.65		5.00	57.32
	205	Apartment	2	2	1	90.88	27.11		5.00	122.99
	206	Apartment	3	3	1	118.80	31.20		5.00	155.00
3rd	301	Apartment	1	1	1	60.81	17.07		5.00	82.88
	302	Apartment	3	3	1	120.10	36.28		5.00	161.38
	303	Apartment	1	1	1	55.49	20.40		5.10	80.99
	304	Studio	1	1	1	37.67	14.65		5.40	57.72
	305	Apartment	2	2	1	90.88	27.11		5.00	122.99
	306	Apartment	3	3	1	118.80	31.20		5.40	155.40
4th	401	Apartment	1	1	1	60.81	17.98		5.00	83.79
	402	Apartment	3	3	1	120.10	36.28		5.10	161.48
	403	Apartment	1	1	1	55.49	20.40		5.00	80.89
	404	Studio	1	1	1	37.67	14.65		5.40	57.72
	405	Apartment	2	2	1	90.88	27.11		5.40	123.39
	406	Apartment	3	3	1	119.21	31.20		12.55	162.96
5th	501	Apartment	1	1	1	60.81	17.07		4.30	82.18
	502	Apartment	3	3	1	120.10	36.28		4.20	160.58
	503	Apartment	1	1	1	55.49	20.40		4.20	80.09
	504	Studio	1	1	1	37.67	14.65		5.40	57.72
	505	Apartment	2	2	1	90.88	26.68		5.40	122.96
	506	Apartment	3	3	1	118.80	31.20		5.40	155.40

FLOOR	UNIT NO	PROPERTY TYPE	BED-ROOMS	BATH-ROOMS	PARK SPACES	INDOOR AREA M ²	COV. VERANDA M ²	UNCOV. VERANDA M ²	STO-RAGE M ²	TOTAL AREA M ²
BLOCK D										
1st	101	Apartment	2	2	1	90.46	23.60		4.90	118.96
	102	Apartment	1	1	1	55.12	18.92	6.00	5.40	85.44
	103	Apartment	1	1	1	55.12	18.85	6.00	5.40	85.37
	104	Apartment	2	2	1	92.39	25.73		5.40	123.52
	105	Apartment	2	2	1	92.72	27.73		7.55	128.00
	106	Apartment	1	1	1	57.55	18.36		8.80	84.71
2nd	201	Apartment	2	2	1	90.46	23.60		8.80	122.86
	202	Apartment	1	1	1	55.12	18.92		5.70	79.74
	203	Apartment	1	1	1	55.12	18.85		9.80	83.77
	204	Apartment	2	2	1	92.39	25.73		5.70	123.82
	205	Apartment	2	2	1	92.72	27.73		5.40	125.85
	206	Apartment	1	1	1	57.55	18.36		6.90	82.81
3rd	301	Apartment	2	2	1	90.46	23.60		4.20	118.26
	302	Apartment	1	1	1	55.12	18.92		4.20	78.24
	303	Apartment	1	1	1	55.12	18.85		5.00	78.97
	304	Apartment	2	2	1	92.39	25.73		5.00	123.12
	305	Apartment	2	2	1	92.72	27.73		5.00	125.45
	306	Apartment	1	1	1	57.55	18.36		5.00	80.91
4th	401	Apartment	2	2	1	90.46	23.60		4.30	118.36
	402	Apartment	1	1	1	55.12	18.92		5.10	79.14
	403	Apartment	1	1	1	55.12	18.85		5.40	79.37
	404	Apartment	2	2	1	92.39	25.73		4.20	122.32
	405	Apartment	2	2	1	92.72	27.73		4.20	124.65
	406	Apartment	1	1	1	57.55	18.36		5.50	81.41
5th	501	Apartment	2	2	1	90.46	23.60		9.10	123.16
	502	Apartment	1	1	1	55.12	18.92		9.40	83.44
	503	Apartment	1	1	1	55.12	18.85		9.30	83.27
	504	Apartment	2	2	1	92.39	25.73		5.00	123.12
	505	Apartment	2	2	1	92.72	27.73		11.10	131.55
	506	Apartment	1	1	1	57.55	18.36		5.10	81.01



NOTE: the areas stated above may slightly differ upon issuance of relevant authority permits

*All 3D images and photographs consist of indicative information and the project can differ insignificantly from the displayed images. Furniture and interior items are extras.

choice of properties

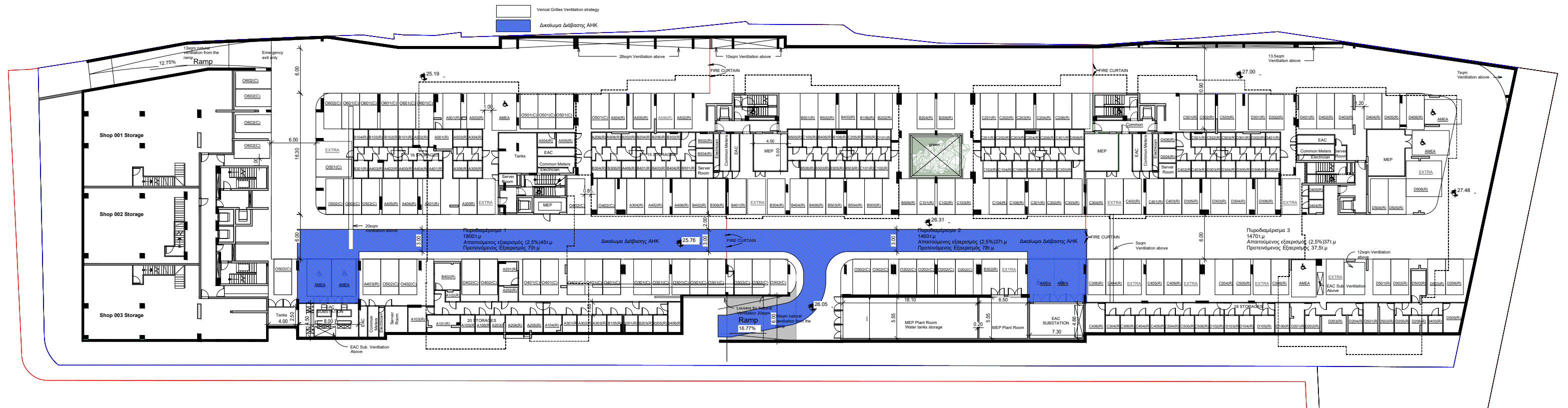
commercial

FLOOR	UNIT NO	PROPERTY TYPE	BED-ROOMS	BATH-ROOMS	PARK SPACES	INDOOR AREA M ²	COV. VERANDA M ²	SELLABLE AUXILIARY FLOOR AREA	PLANTER AREA M ²	ROOF TERRACE M ²	STORAGE M ²	COMMON AREA PER UNIT M ²	TOTAL AREA M ²
COMMERCIAL													
G	O001	Shop	Shop		1	161.20		mezzanine 87.88			225.18	55.42	83.63
	O002	Shop	Shop		1	145.60		mezzanine 79.04			166.40	49.98	173.24
	O003	Shop	Shop		1	161.20		mezzanine 88.04			219.90	55.46	89.60
1st	O101	Office	Office		1	289.56	87.47					83.89	57.60
	O102	Office	Office		1	289.67	87.63					83.95	132.26
2nd	O201	Office	Office		1	289.56	87.47					83.89	155.05
	O202	Office	Office		1	289.67	87.63					83.95	461.25
3rd	O301	Office	Office		1	289.56	87.47					83.89	460.92
	O302	Office	Office		1	289.67	87.63					83.95	461.25
4th	O401	Office	Office		1	289.56	90.98					84.67	465.21
	O402	Office	Office		1	289.67	91.13					84.73	465.53
5th	O501	Office	Office		1	289.56	90.98					84.67	465.21
	O502	Office	Office		1	289.67	91.13					84.73	465.53
6th	O601	Office	Office		1	289.56	90.98	7th 31.00	15.05	185.10		91.57	703.26
	O602	Office	Office		1	289.67	91.13	7th 31.00	15.05	184.70		91.62	703.17
Common Roof										131.43			



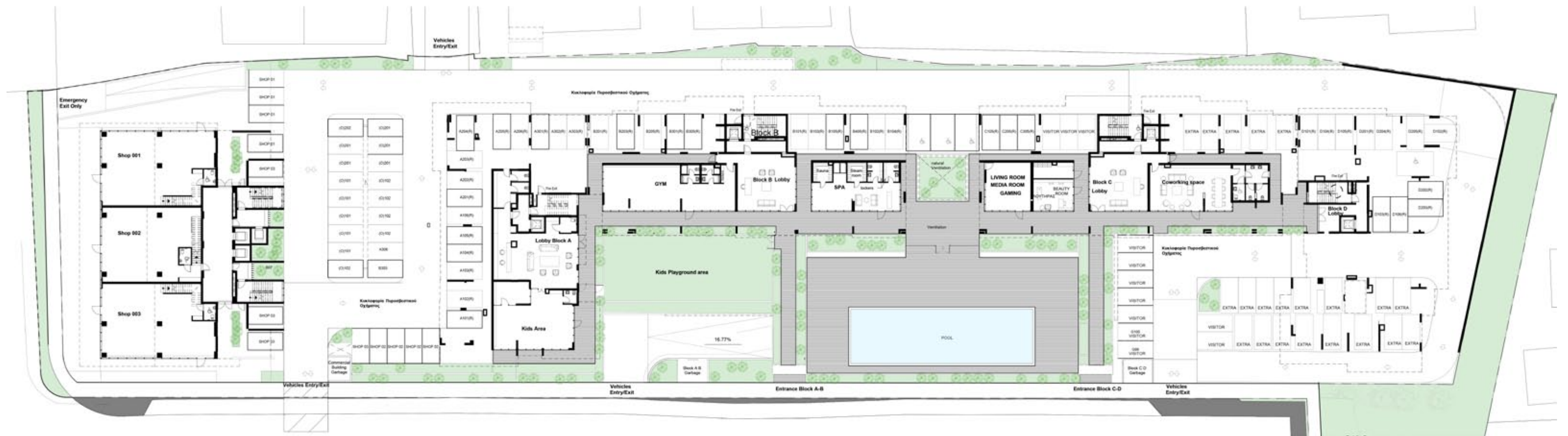
• floor plans

basement parking



• floor plans

ground floor



*Floor plans show approximate measurements only. The exact layout and sizes may vary

• floor plans blocks a&b



1st floor



block a

UNIT N°	TOTAL AREA M ²
A101	133.00
A102	82.34
A103	90.12
A104	131.67
A105	120.93
A106	89.71

block b

UNIT N°	TOTAL AREA M ²
B101	83.63
B102	173.24
B103	89.60
B104	57.60
B105	132.26
B106	155.05

• floor plans blocks a&b



2nd floor



block a

UNIT N°	TOTAL AREA M ²
A201	122.84
A202	80.28
A203	79.76
A204	121.46
A205	122.91
A206	79.27

block b

UNIT N°	TOTAL AREA M ²
101	83.93
102	160.60
103	80.95
104	56.65
105	123.03
106	154.25

• floor plans blocks a&b



3rd floor



block a

UNIT N°	TOTAL AREA M ²
A301	118.65
A302	79.68
A303	79.61
A304	119.81
A305	121.01
A306	80.07

block b

UNIT N°	TOTAL AREA M ²
B301	83.73
B302	160.70
B303	80.55
B304	57.55
B305	122.95
B306	155.31

• floor plans blocks a&b



4th floor



block a

UNIT N°	TOTAL AREA M ²
A401	118.35
A402	79.28
A403	79.21
A404	119.71
A405	120.91
A406	79.97

block b

UNIT N°	TOTAL AREA M ²
B401	83.57
B402	169.15
B403	80.55
B404	57.45
B405	122.45
B406	158.11

• floor plans blocks a&b



5th floor



block a

UNIT N°	TOTAL AREA M ²
A501	122.45
A502	79.53
A503	79.21
A504	120.21
A505	121.41
A506	79.17

block b

UNIT N°	TOTAL AREA M ²
B501	83.63
B502	161.90
B503	80.55
B504	57.55
B505	122.73
B506	155.15

• floor plans blocks c&d



1st floor



block c

UNIT N°	TOTAL AREA M ²
C101	83.65
C102	173.07
C103	89.84
C104	57.32
C105	131.82
C106	155.00

block d

UNIT N°	TOTAL AREA M ²
D101	118.96
D102	85.44
D103	85.37
D104	123.52
D105	128.00
D106	84.71

• floor plans blocks c&d



2nd floor



block c

UNIT N°	TOTAL AREA M ²
C201	82.78
C202	161.38
C203	80.89
C204	57.32
C205	122.99
C206	155.00

block d

UNIT N°	TOTAL AREA M ²
D201	122.86
D202	79.74
D203	83.77
D204	123.82
D205	125.85
D206	82.81

• floor plans blocks c&d



3rd floor



block c

UNIT N°	TOTAL AREA M ²
C301	82.88
C302	161.38
C303	80.99
C304	57.72
C305	122.99
C306	155.40

block d

UNIT N°	TOTAL AREA M ²
D301	118.26
D302	78.24
D303	78.97
D304	123.12
D305	125.45
D306	80.91

• floor plans blocks c&d



4th floor



block c

UNIT N°	TOTAL AREA M ²
C401	83.79
C402	161.48
C403	80.89
C404	57.72
C405	123.39
C406	162.96

block d

UNIT N°	TOTAL AREA M ²
D401	118.36
D402	79.14
D403	79.37
D404	122.32
D405	124.65
D406	81.41

• floor plans blocks c&d



5th floor



block c

UNIT N°	TOTAL AREA M ²
C501	82.18
C502	160.58
C503	80.09
C504	57.72
C505	122.96
C506	155.40

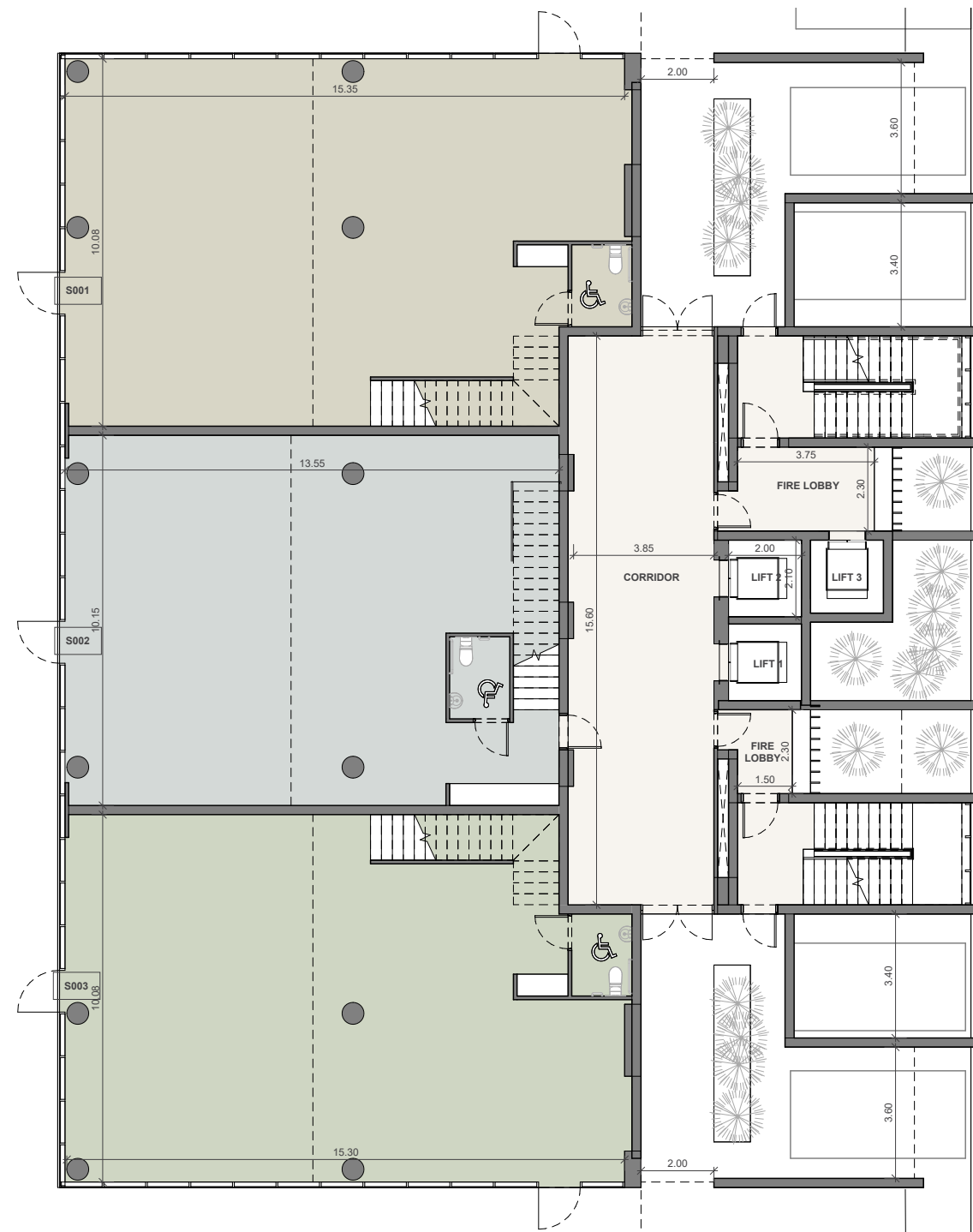
block d

UNIT N°	TOTAL AREA M ²
D501	123.16
D502	83.44
D503	83.27
D504	123.12
D505	131.55
D506	81.01

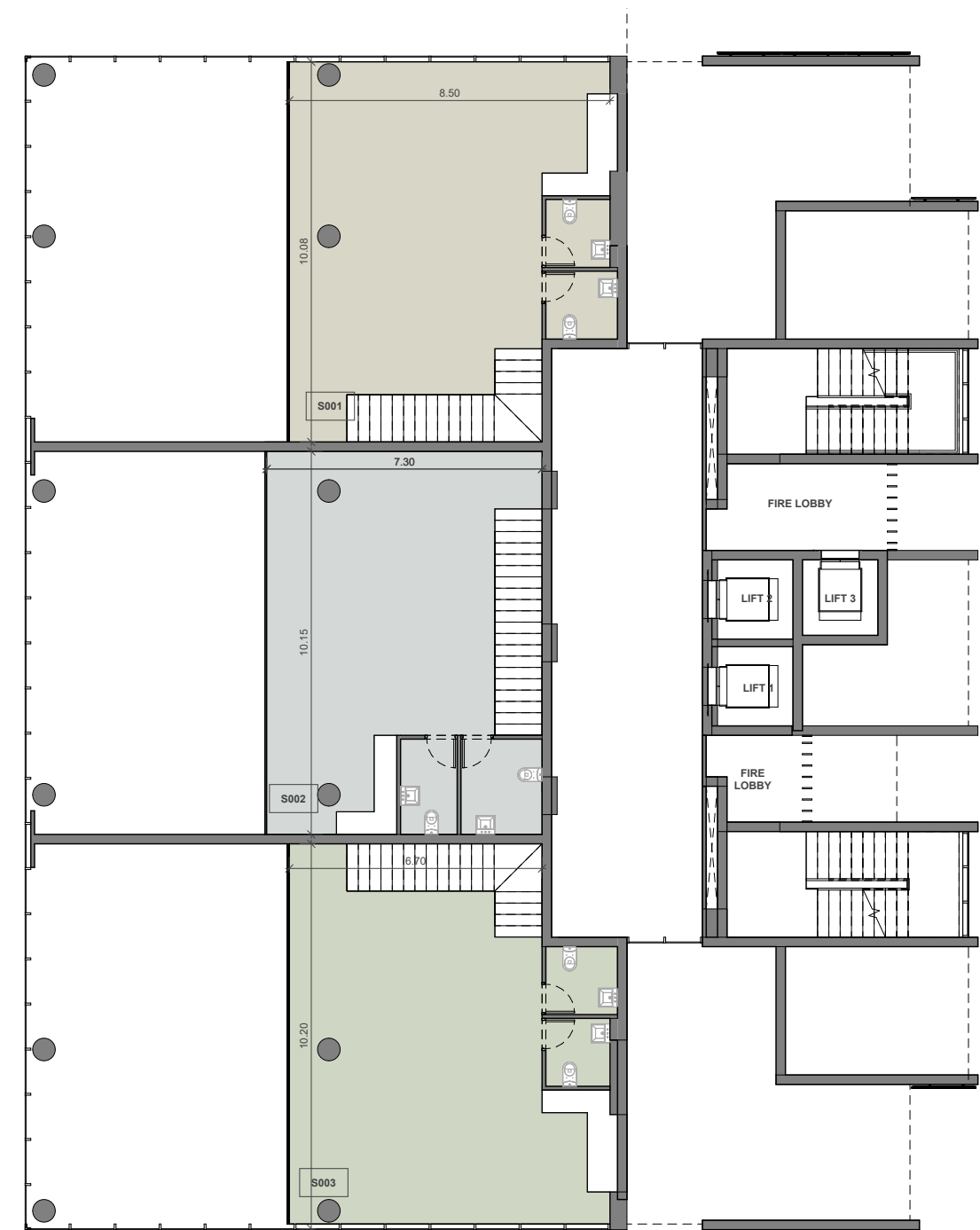
• floor plans commercial block



ground floor



mezzanine

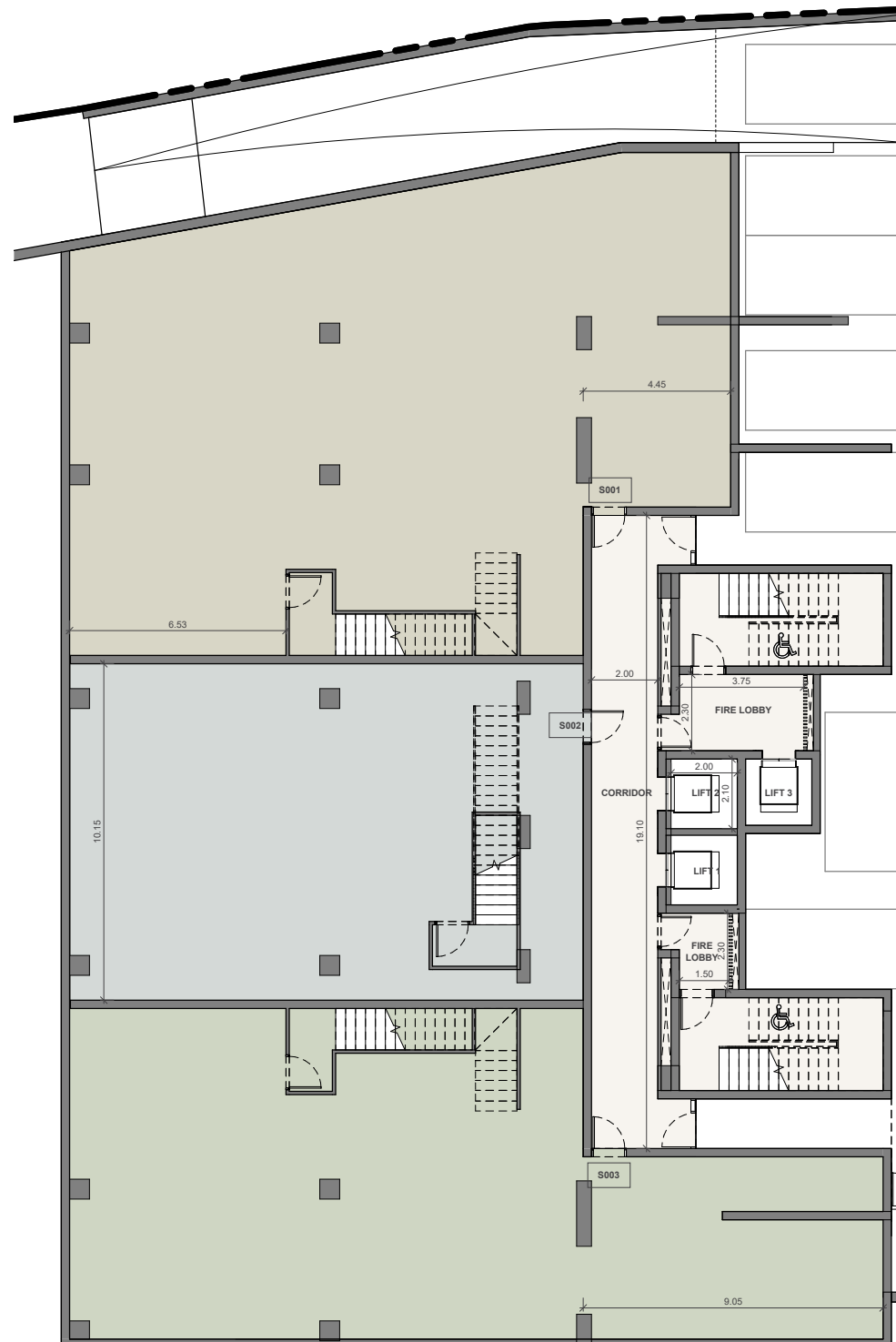


UNIT N°	TOTAL AREA M ²
O001	529.68
O002	441.02
O003	524.60

• floor plans commercial block



basement



1st floor



UNIT N°	TOTAL AREA M ²
O101	460.92
O102	461.25

• floor plans commercial block



2nd floor



UNIT N°	TOTAL AREA M ²
O201	460.92
O202	461.25

3rd floor



UNIT N°	TOTAL AREA M ²
O301	460.92
O302	461.25

• floor plans commercial block



4th floor



UNIT N°	TOTAL AREA M ²
O401	465.21
O402	465.53

5th floor



UNIT N°	TOTAL AREA M ²
O501	465.21
O502	465.53

• floor plans commercial block

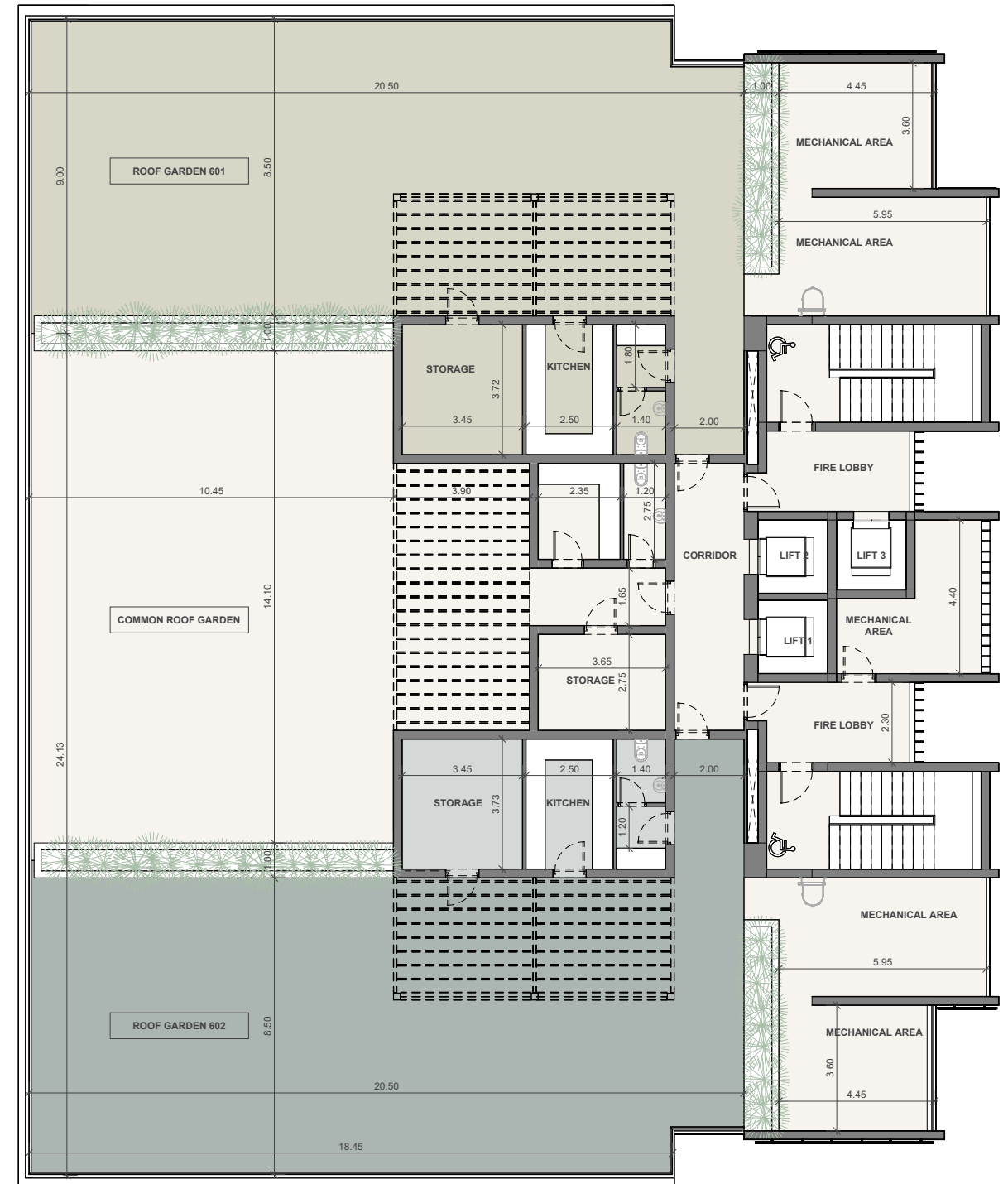


6th floor



UNIT N°	TOTAL AREA M ²
O601	703.26
O602	703.17

roof garden



UNIT N°	TOTAL AREA M ²
Common Roof	131.43

UNIT N°	TOTAL AREA M ²
O601	185.10
O602	184.70

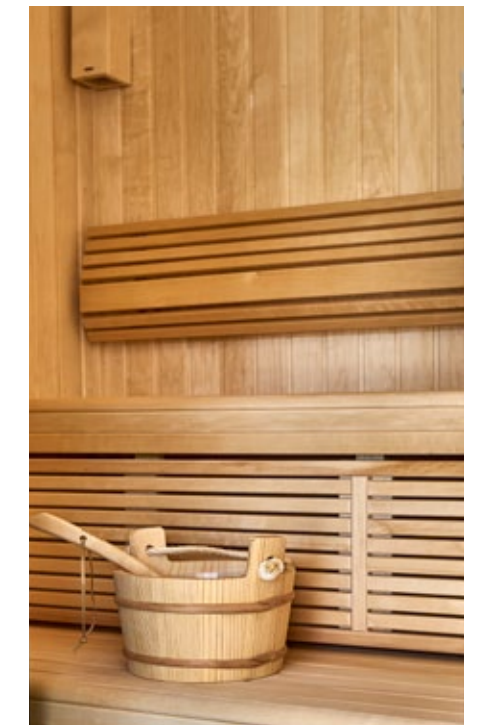
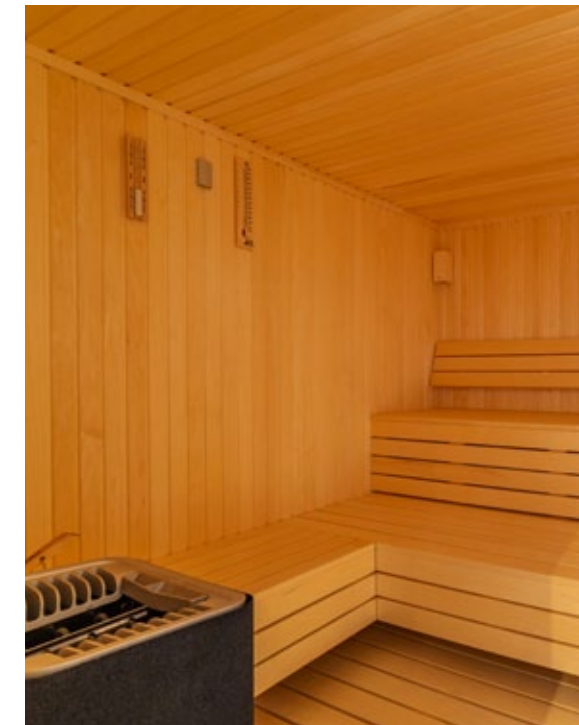
• internal infrastructure

**signature internal infrastructure
objects made for different tastes
and preferences**

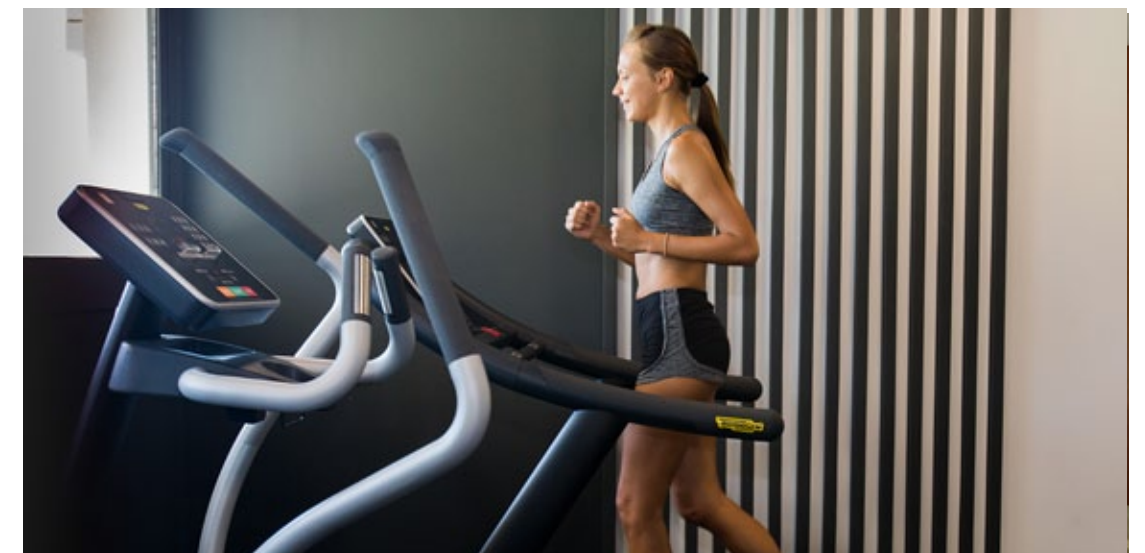
swimming pool



sauna



gym



• internal infrastructure

co-working spaces



introducing a number of new infrastructure elements to promote your well-being and happy living

yoga room



kids area



• signature finishes – residential



bbf:elegance

every property is delivered with signature top standard finishes:

- fully completed finishings
- semi-solid parquet floors in each room
- marble floor and walls in the toilets and bathrooms
- high ceilings (3.15 m)
- security and fireproof entrance doors
- water heated floors
- air conditioning
- high standard sanitary ware from European brands
- thermal aluminum window frames with double glazing
- high standard kitchen cabinets
- high standard wardrobes from European brands
- soft closers
- door stoppers

note: movable furniture, home appliances & interior items are extras



• signature finishes – commercial



bbf:shell&core

in order to maximize your brand recognition, we present you with a shell&core interior solutions, where you are free to design your future workspace according to all your needs.

- shell&core finishings
- marble walls and floors in the restrooms
- ceramic tile floors in the verandas
- provisions for A/C in every office
- high standard sanitary ware from European brands in common areas and restrooms
- thermal aluminum doors and window frames with double glazing
- provisions for electrical installations and lighting fittings
- provisions for plumbing–drainage, with hot and cold water and an instant heater included
- no loose furniture is included
- keypad intercom at the lobby main entrance door

immigration opportunities

secure yourself with a home and a European permanent residency with one investment

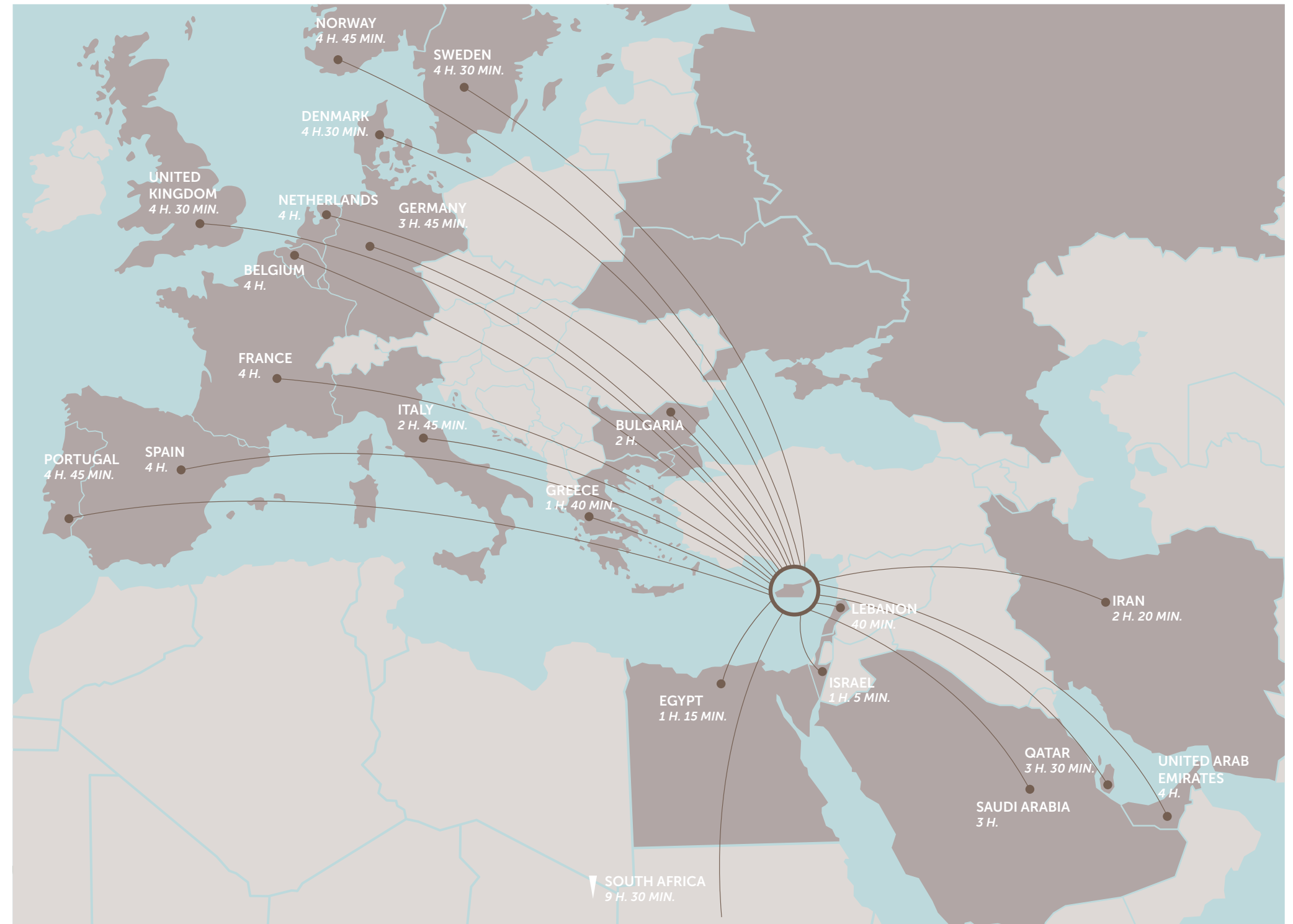
Enjoy the full benefits of Mediterranean lifestyle, rights and opportunities with the Cyprus Permanent Residency Programme (PRP)

The infinite residence permit is issued within 4 months to you and your family members (to your spouse and children under 25 years old), will allow you to have a business and receive shareholder dividends in Cyprus with the only obligation of visiting the island every 2 years and by investing 300.000 + VAT in one of the following categories:

A. Investment in house/apartment of at least €300.000 + VAT from a land development company and should be the first purchase, therefore it will bear VAT. Note that the applicant may purchase up to two (2) units (apartments or houses), that are sold by land development companies (not necessarily from the same developer) for the first time.

B. Investment in other types of properties (excluding houses/apartments): such as offices, stores, hotels, or a combination of such for a total of €300.000. These types of properties can be resale.

- **Note 1:** if the investor sells or in any way, parts with his investment without its immediate replacement with another investment of the same or higher value (provided that this investment also fulfills the requirement above) then a procedure for removal of the Permit will commence.
- **Note 2:** at the time of submission of the application, €300.000 (excluding the VAT) must be transferred in settlement of the property and the contract of sale must be registered at the Land Registry Office.
- **Note 3:** evidence must be provided that funds are coming from abroad and are not the product of internal lending (i.e. from CY bank). If the applicant invests in a residential property, his income must be entirely from abroad. If the applicant chooses to invest in 2(B), his total income or part of it may also arise from sources originating from activities within the Republic, provided that it is taxable in the Republic.



•notes

A series of horizontal dotted lines for taking notes.

bbf: CARE

when investing into a property from bbf, you become a part of an exclusive community with superior service. Our promise to all our residents – to make living at bbf: suggest 'living more'.
More comfortable. More responsible. More reliable.

bbf: design

interior Design services
Luxury furniture and accessories showroom

UHA arhitecture

design and deliver projects that vary in context, function, and scale, encompassing architecture, masterplanning, and interior design. From concept design to turnkey, we have projects on-site from London to Mumbai, covering boutique residential to high-tech workspace.

bbf:

headquarters

Limassol 28 Ampelakion Street,
P. Germasogeia, 4046 Limassol,
Cyprus

Office: +357 25 315 318
info@bbf.com



bbf.com