



AFFORDABLE ELEGANCE

OXFORD I

OXFORD I

Living at one of Limassol's most upcoming locations is more than great...it is all about absorbing the vibe of one of the most cosmopolitan Mediterranean destinations right next to the city's world-famous harbour. OXFORD I, an impressive residential project, is defined by its location, the sense of a true and authentic community and the endless potential of constant growth all around it.

CONTENT

OXFORD I	3
THE PROJECT	4-9
THE DETAILS	10-17
TURNKEY FINISHES	18-21
COMFORT LIVING	22-26
THE LOCATION	27-29
MAP	30-31
PLANS	32-63
KALEIDE	64-65
CONTACT	66





THE PROJECT

Located in Agia Fyla, one of the most sought after areas of Limassol, the OXFORD I combines tranquil living without sacrificing the convenience of a modern family's daily requirements. It nears to all city amenities, three prestigious private schools, and two top-notch hospitals, this area is great for families of any size. OXFORD I is a large community of 9 villas and 12 apartments, with a total land area of 4,200 square meters, developed in two phases. OXFORD I contains 25 apartments.



THE DETAILS

9 Houses and 12 Apartments

4 or 5 families in each floor

2 and 5-bedroom apartments

Safe gated complex

Common green areas

Common swimming pool

Children's playground













TURNKEY FINISHES

- High-quality tiles
- High-quality european laminate floors
- High-quality non-slip tiles for bathrooms
- Double-layer aluminum insulation glass windows
- European made security entry door
- Provision for split air conditioner
- European brand sanitary ware
- Eu standard high quality kitchen cabinets and wardrobes
- Countertops in synthetic granite
- High-rise design (2.90-3.20m)





As a family home or a long term investment, Soho's modern approach to city living makes it one of the most exciting living addresses in Limassol

COMFORT LIVING

OXFORD I is the new trend in urban real estate. Apartments that offers the sea view in an affordable package. The way how the overall project and its apartments have been designed successfully replaces any other options in the market. With a minimal architectural design that defines the entire development, with practical interiors, and with an excellent proximity to the sea, this is the ideal place for family living or for real investment opportunities.



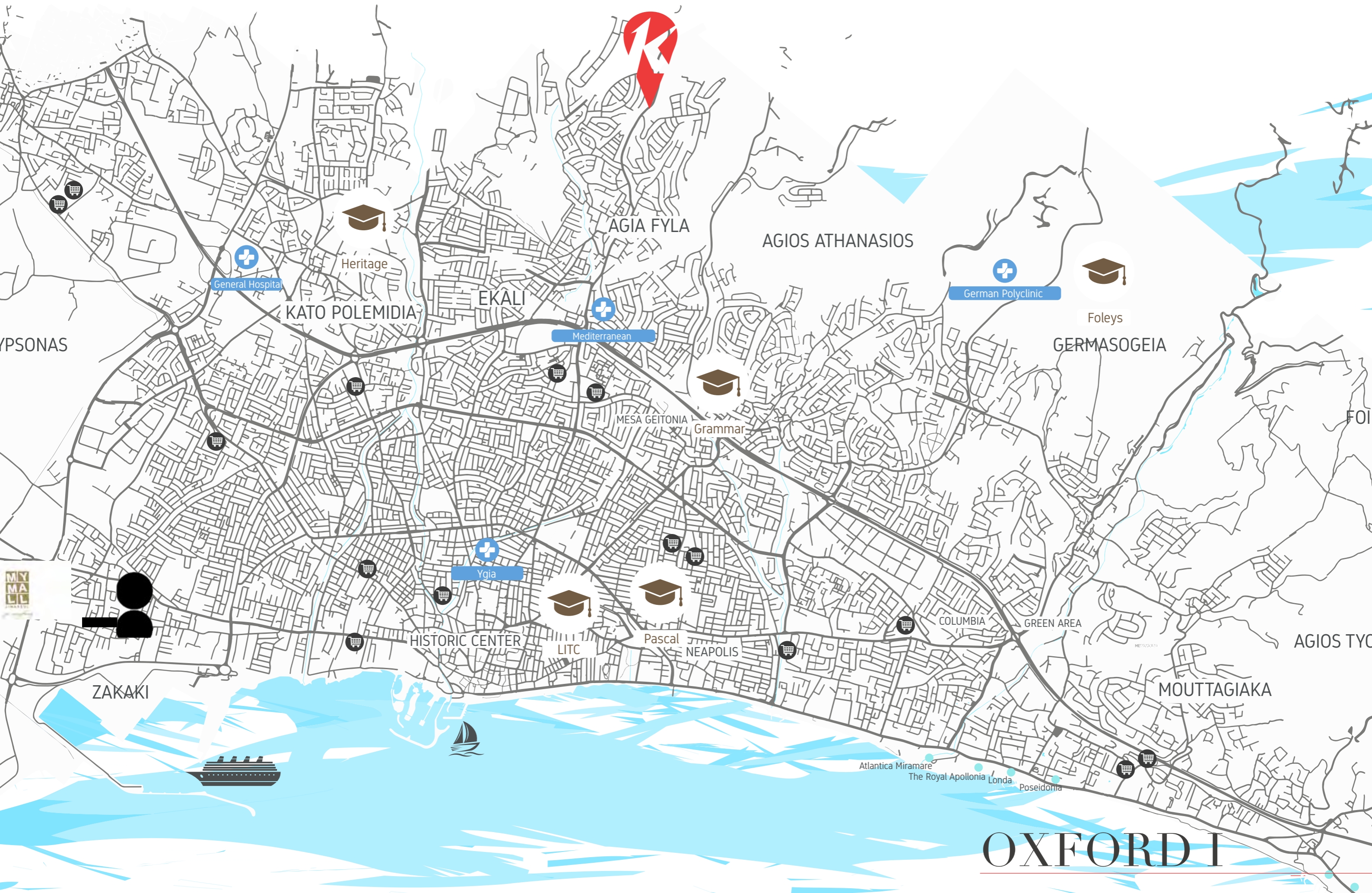
A great option for permanent residence, recreation and real estate investment.

THE LOCATION

Agia Fyla has been one of the most sought after locations in Limassol and has experienced a big growth the last years especially by families that were searching for a quiet living without having to sacrifice convenience, good access to the city's amenities but also to their jobs. It is a 3-minute drive from Grammar School; a 2-minute drive from Mediterranean Hospital which is the best private hospital in Limassol; a 9-minute drive from Foley's School, which is ranked No. 1 in Cyprus, and a German medical center with first-class medical resources. Heritage School is 10 minutes away by car. From Alpha Mega and other large supermarkets are 5 minutes away by car. A 12-minute drive to the beach, the ancient city center, the promenade and the Limassol Marina.

LOCATION BENEFITS

- Fine location
- Developed infrastructure
- Contemporary accommodation
- High investment value
- Instant proximity to the city centre

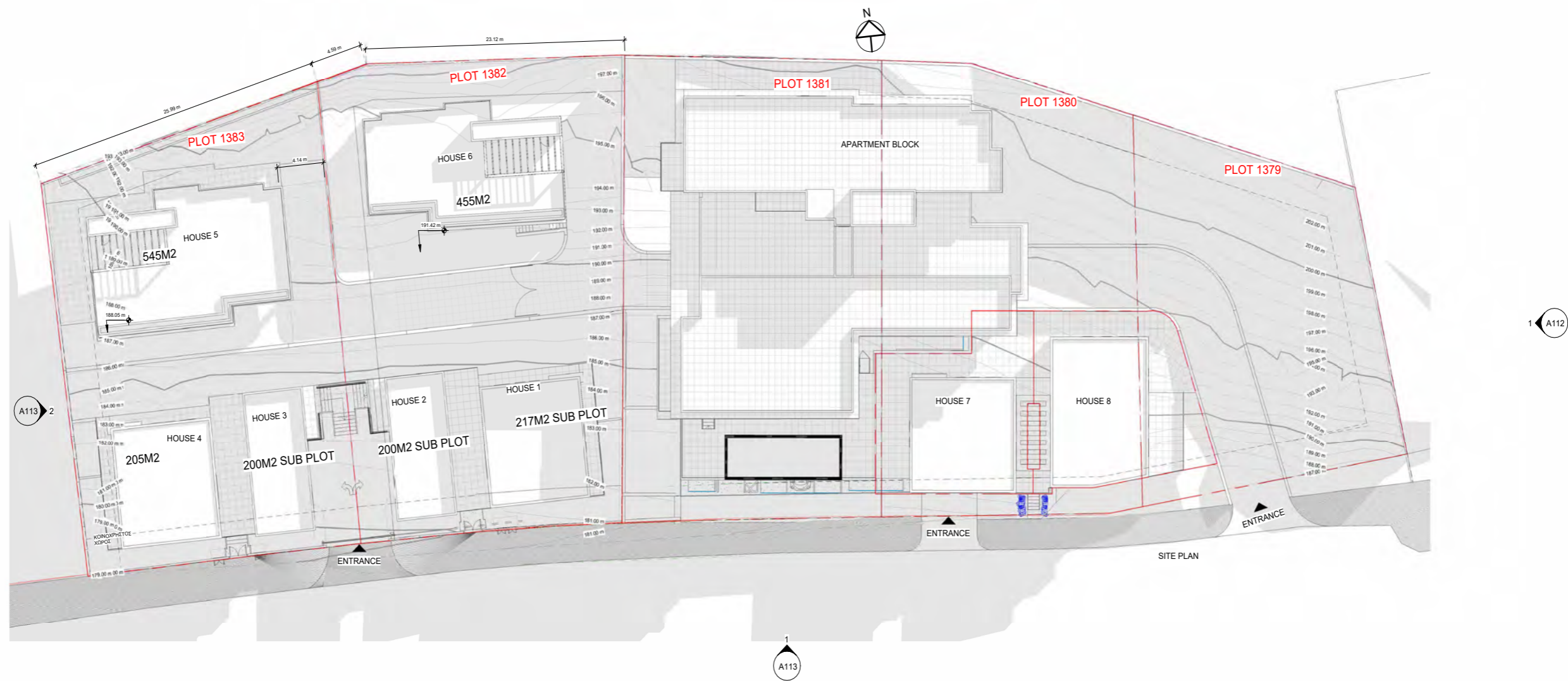


OXFORD I

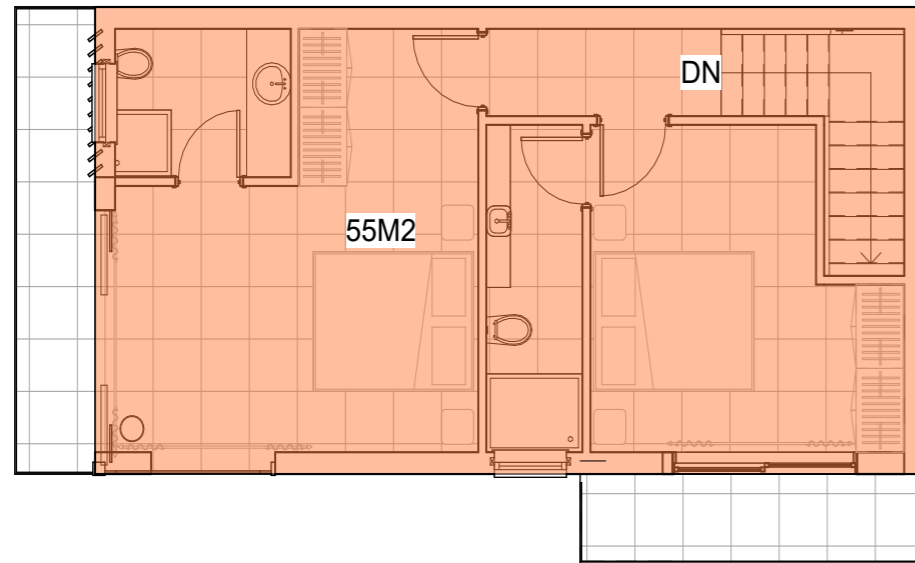
UNITS

No	Floor	Type	Bedrooms	Bathrooms	Covered Internal (sq.m.)	Covered Veranda (sq.m.)	Uncovered Veranda/Basement (sq.m.)	Plot (sq.m.)	Storage (sq.m.)	Parking(sq. m.)	Common Area (sq.m.)	Total Covered (sq.m.)	Total Area (sq.m.)	Swimming Pool
APARTMENT														
101	1	Apartment	3	2	107.00	26.00	0	0	2	15	33.00	133.00	166.00	COMMON
102	1	Apartment	2	3	96.00	26.00	0	0	2	15	33.00	122.00	155.00	COMMON
103	1	Apartment	3	3	108.00	21.00	0	0	2	15	33.00	129.00	162.00	COMMON
201	2	Apartment	3	2	107.00	26.00	0	0	2	15	33.00	133.00	166.00	COMMON
202	2	Apartment	2	3	96.00	26.00	0	0	2	15	33.00	122.00	155.00	COMMON
203	2	Apartment	3	3	108.00	21.00	0	0	2	15	33.00	129.00	162.00	COMMON
301	3	Apartment	3	2	107.00	26.00	0	0	2	15	34.00	133.00	167.00	COMMON
302	3	Apartment	2	3	101.00	27.00	0	0	2	15	34.00	128.00	162.00	COMMON
303	3	Apartment	3	3	108.00	21.00	0	0	2	15	34.00	129.00	163.00	COMMON
304	3	Apartment	2	2	76.00	18.00	0	0	2	15	34.00	94.00	128.00	COMMON
305	3	Apartment	3	2	97.00	25.00	0	0	2	15	34.00	122.00	156.00	COMMON
401	4	Apartment	3	2	97.00	26.00	60	0	2	15	29.00	123.00	212.00	COMMON
402	4	Apartment	2	2	76.00	18.00	50	0	2	15	29.00	94.00	173.00	COMMON
501	5	Apartment	3	2	97.00	19.00	0	0	2	15	22.00	116.00	138.00	COMMON
502	5	Apartment	2	2	76.00	15.00	0	0	2	15	22.00	91.00	113.00	COMMON
HOUSE														
HOUSE 1	1	House	3	3	151.00	18.00	0	217	NO	15	0.00	169.00	169.00	COMMON
HOUSE 2	1	House	2	2	110.00	22.00	0	200	NO	15	0.00	132.00	132.00	COMMON
HOUSE 3	1	House	3	2	110.00	22.00	0	200	NO	15	0.00	132.00	132.00	COMMON
HOUSE 4	1	House	3	3	151.00	18.00	0	205	NO	15	0.00	169.00	169.00	COMMON
HOUSE 5	1	House	4	5	287.00	58.00	0	545	NO	15	0.00	345.00	345.00	COMMON
HOUSE 6	1	House	5	4	240.00	51.00	0	455	NO	15	0.00	291.00	291.00	COMMON
HOUSE 7	1	House	3	4	156.00	24.00	0	180	NO	15	0.00	180.00	180.00	COMMON
HOUSE 8	1	House	5	3	188.00	22.00	0	200	NO	15	0.00	210.00	210.00	COMMON

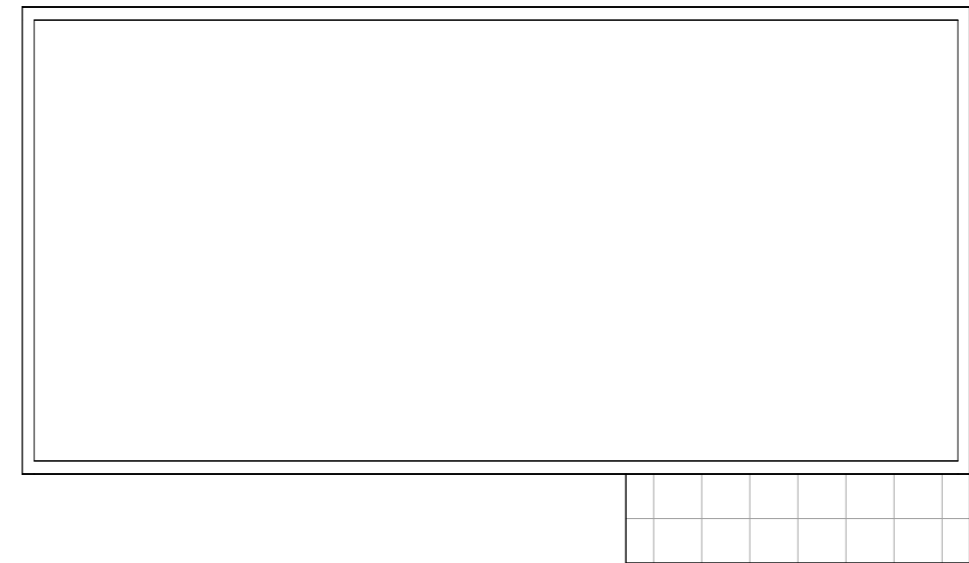
MASTERPLAN



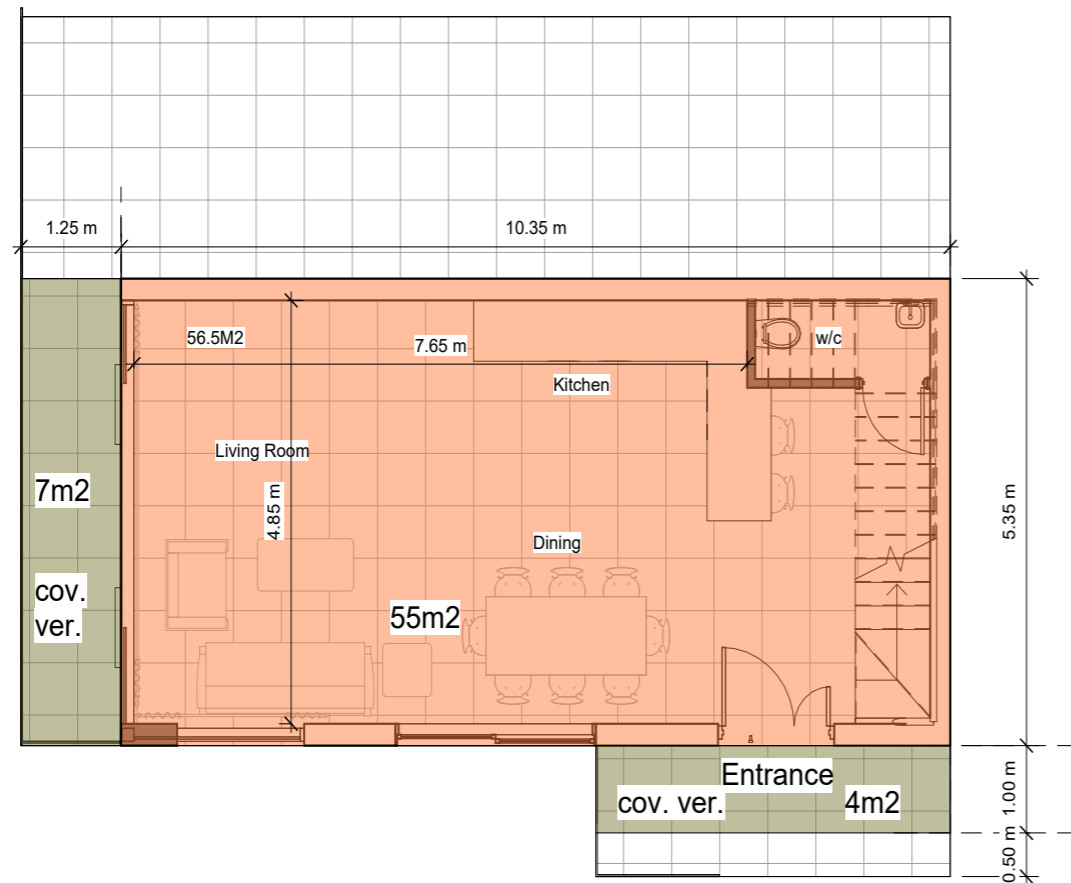
HOUSE 2,3



FIRST FLOOR PLAN

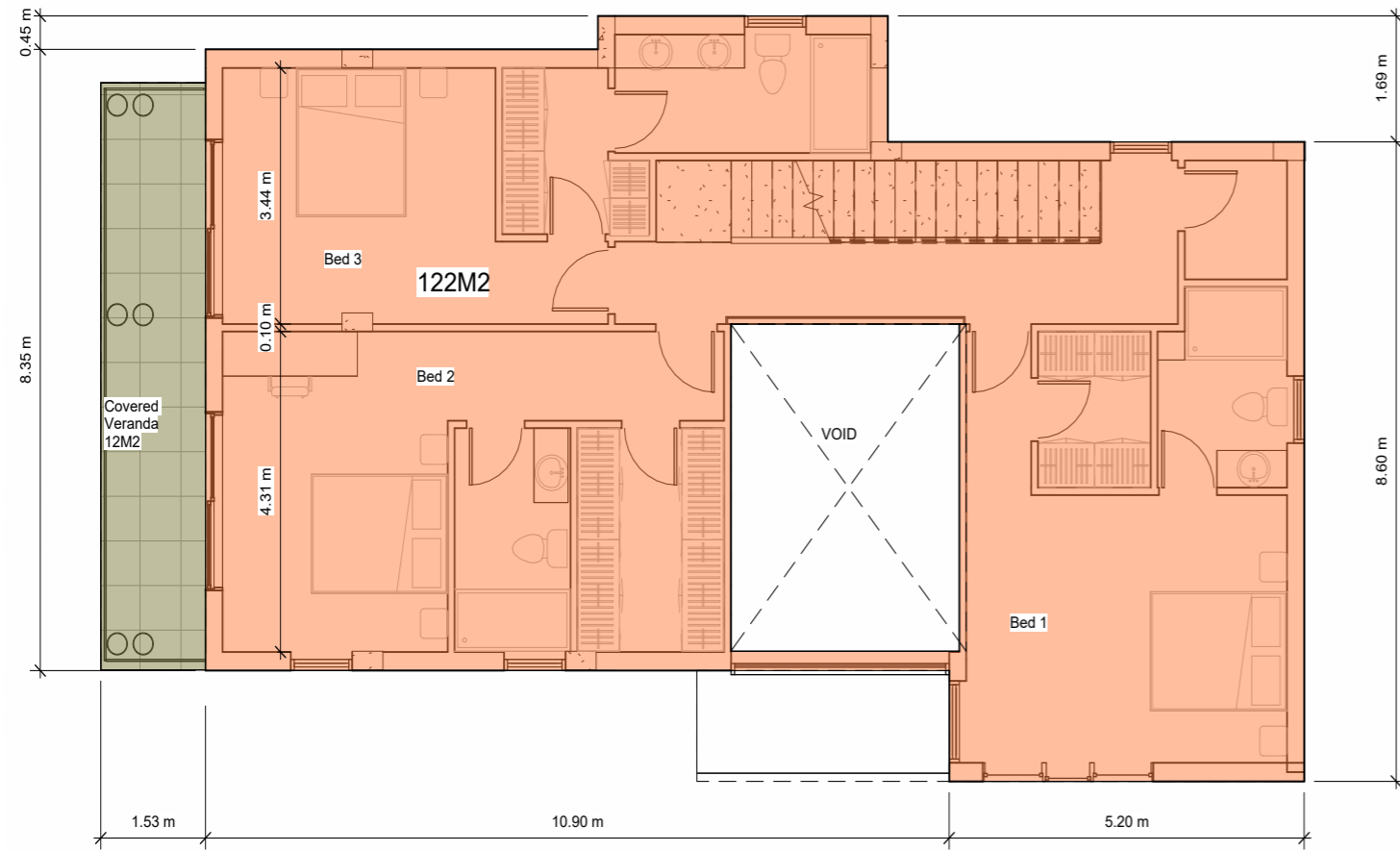


ROOF PLAN

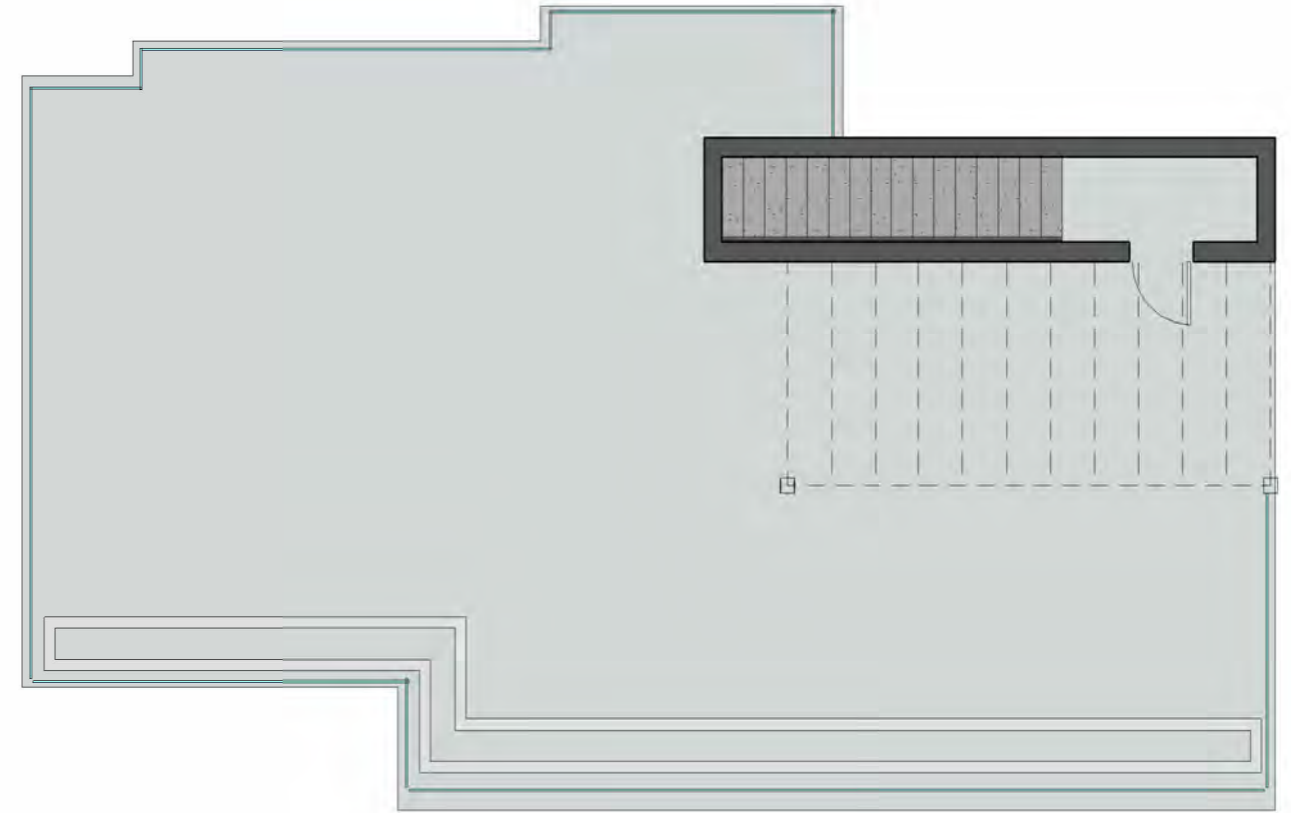


GROUND FLOOR PLAN

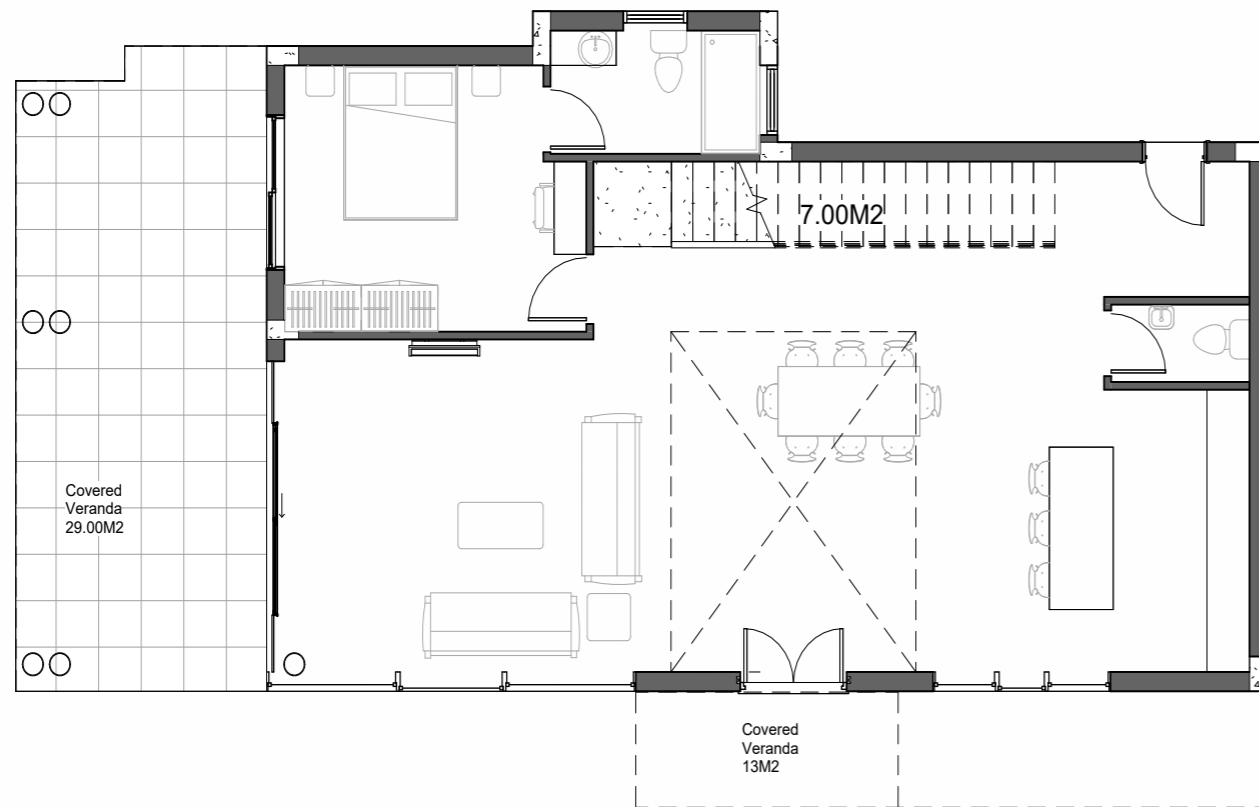
HOUSE 5



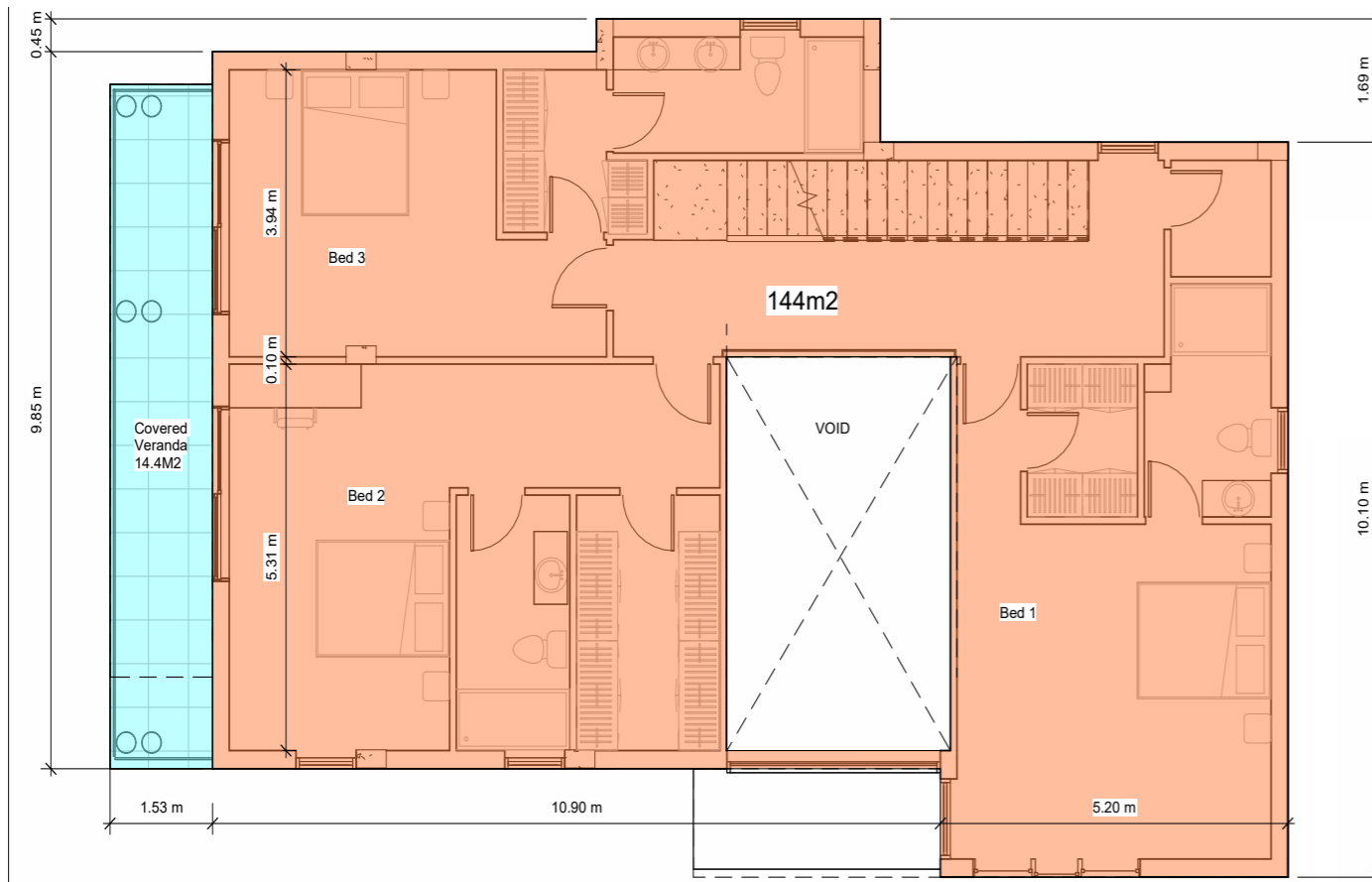
1st. FLOOR



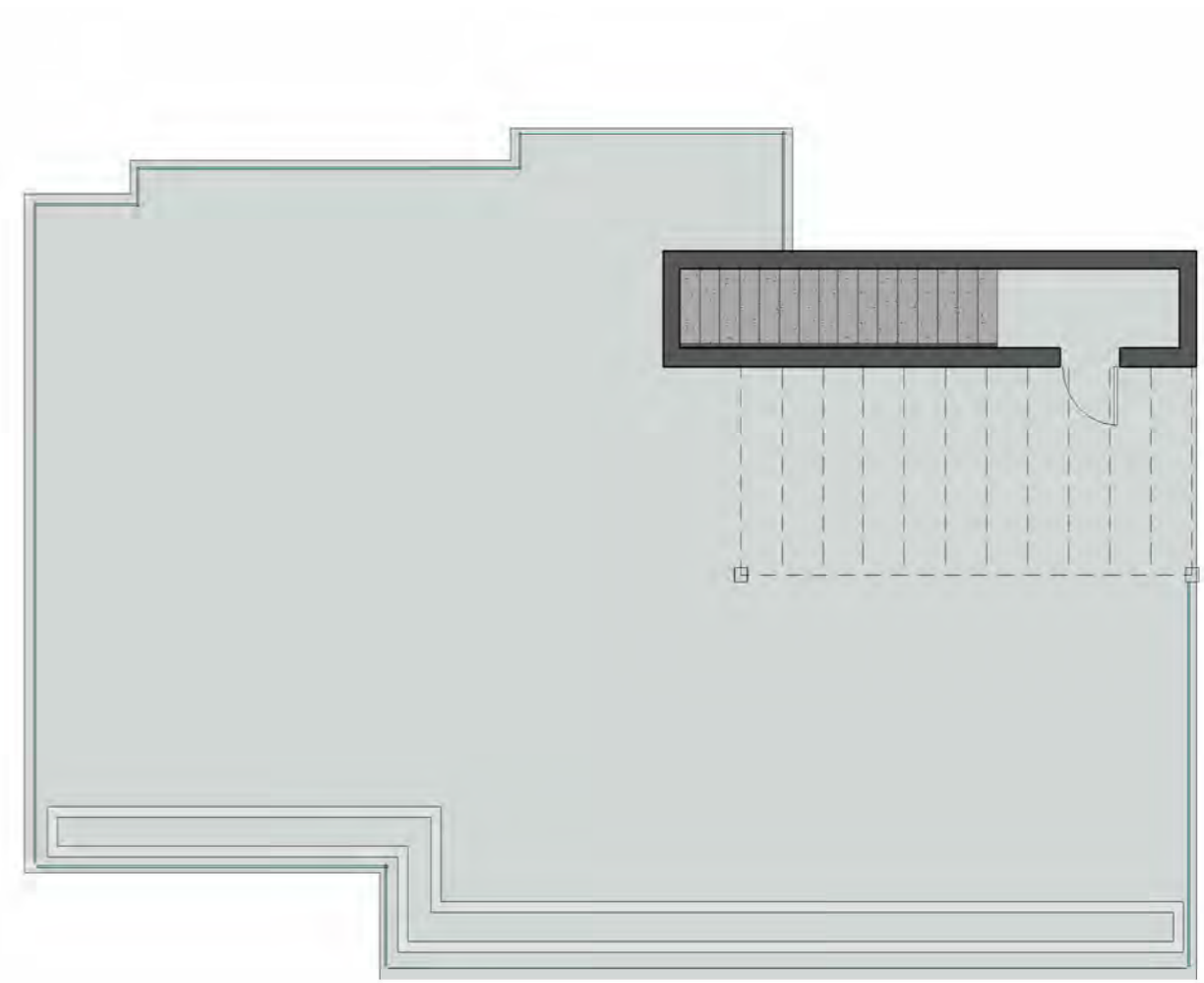
TYPE A3 ROOF GARDEN 147M2



HOUSE 6

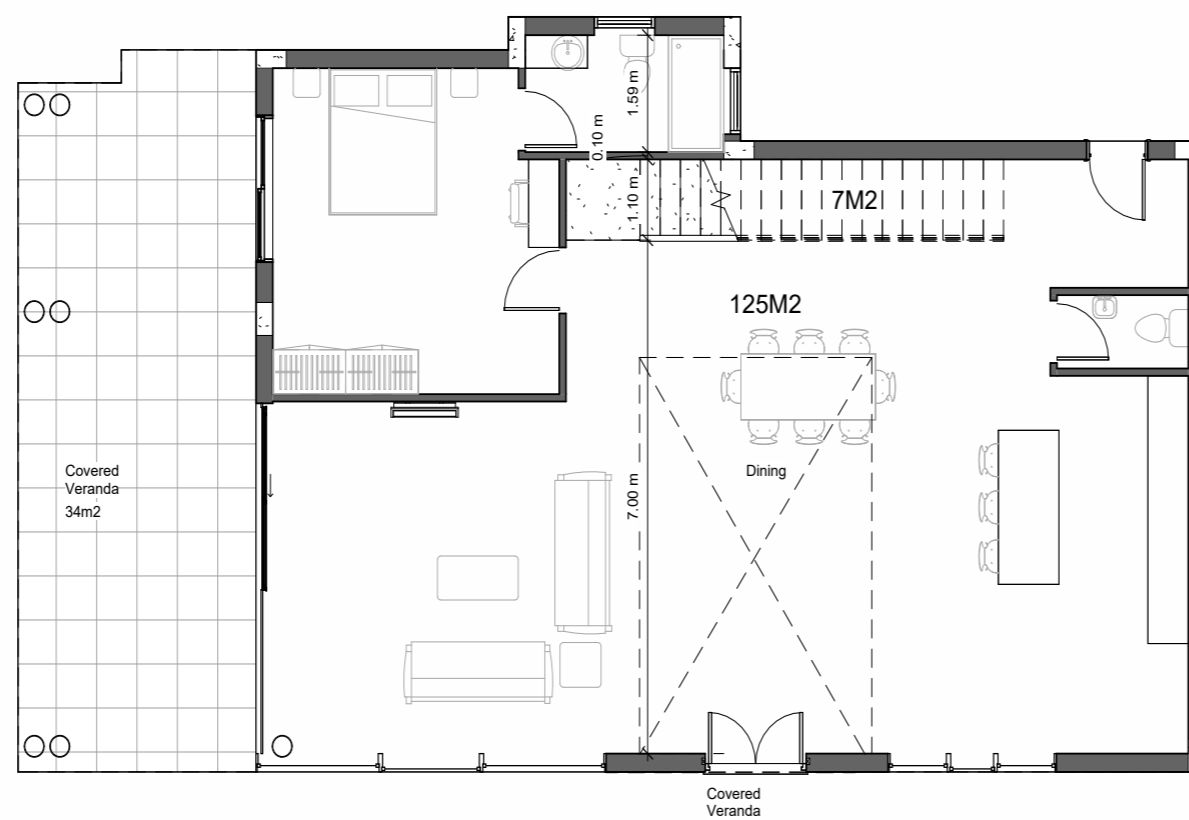


2 Level 3
1 : 100

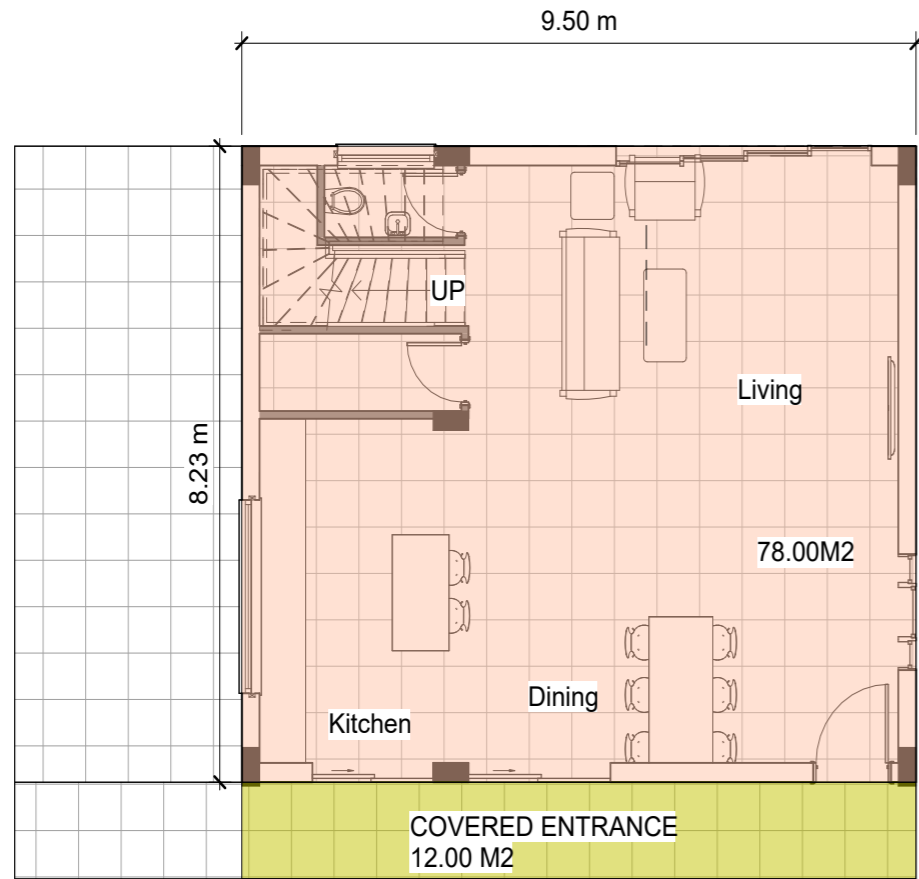


ROOF GARDEN 182m²

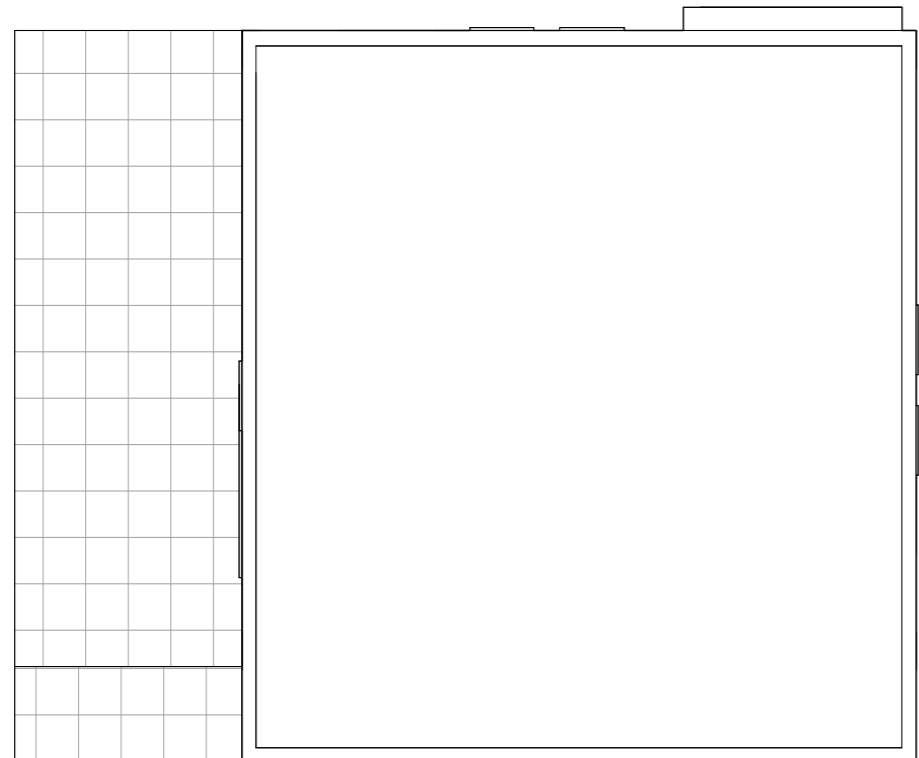
3 Level 5
1 : 100



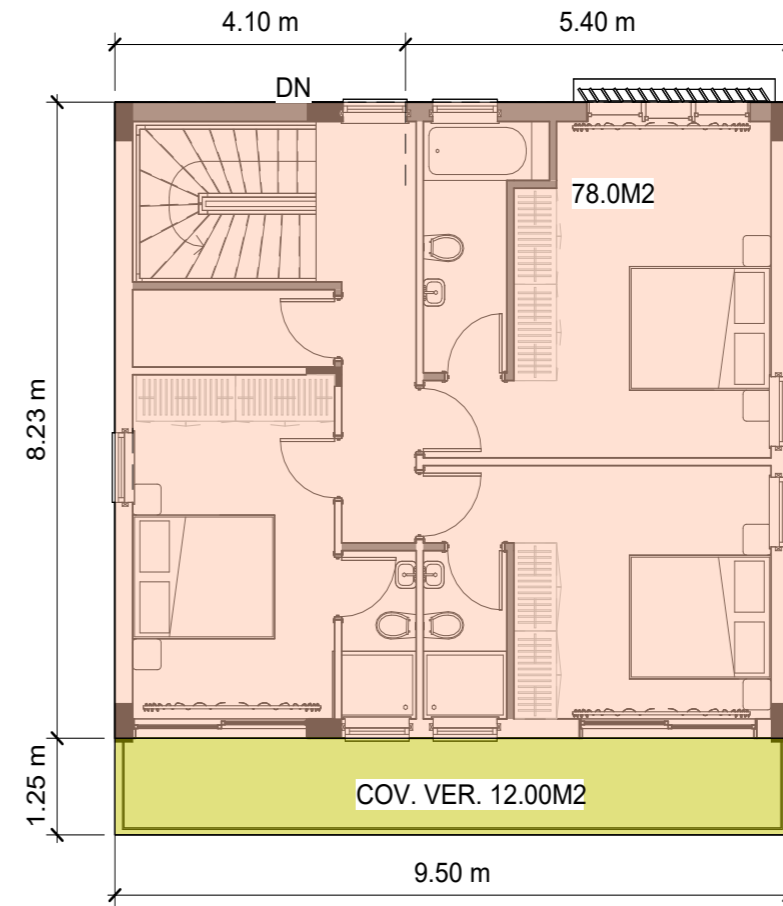
HOUSE 1,4,7



GROUND FLOOR PLAN

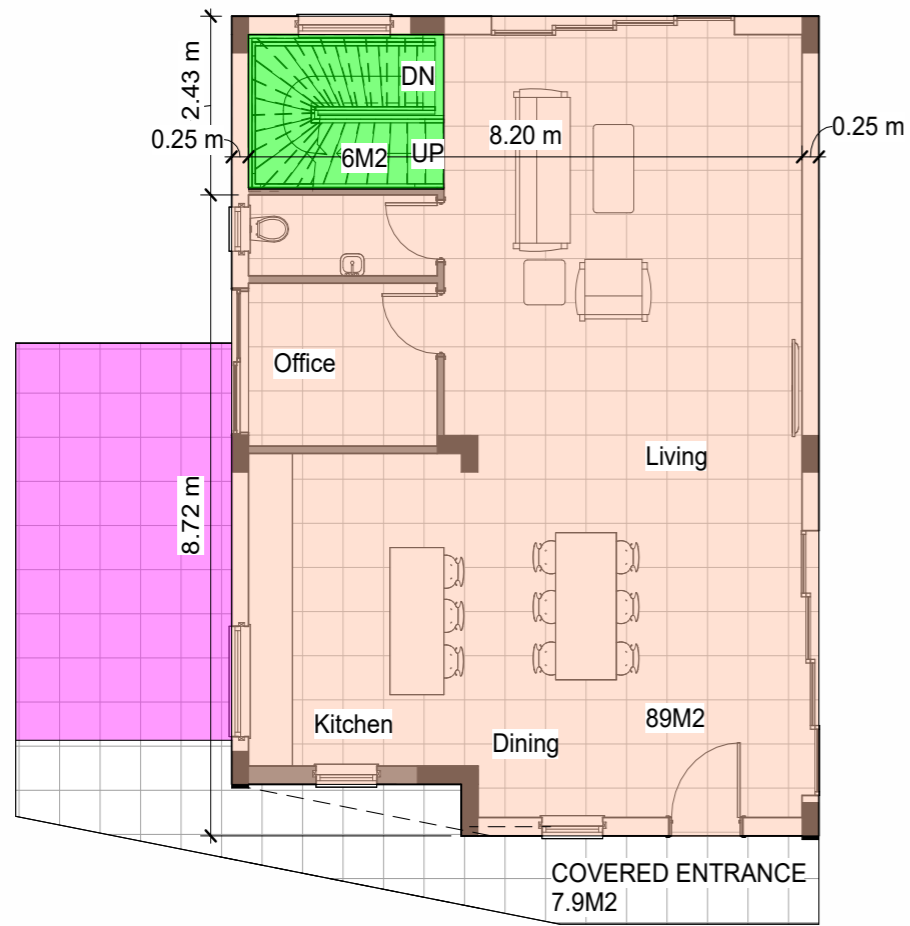


ROOF PLAN

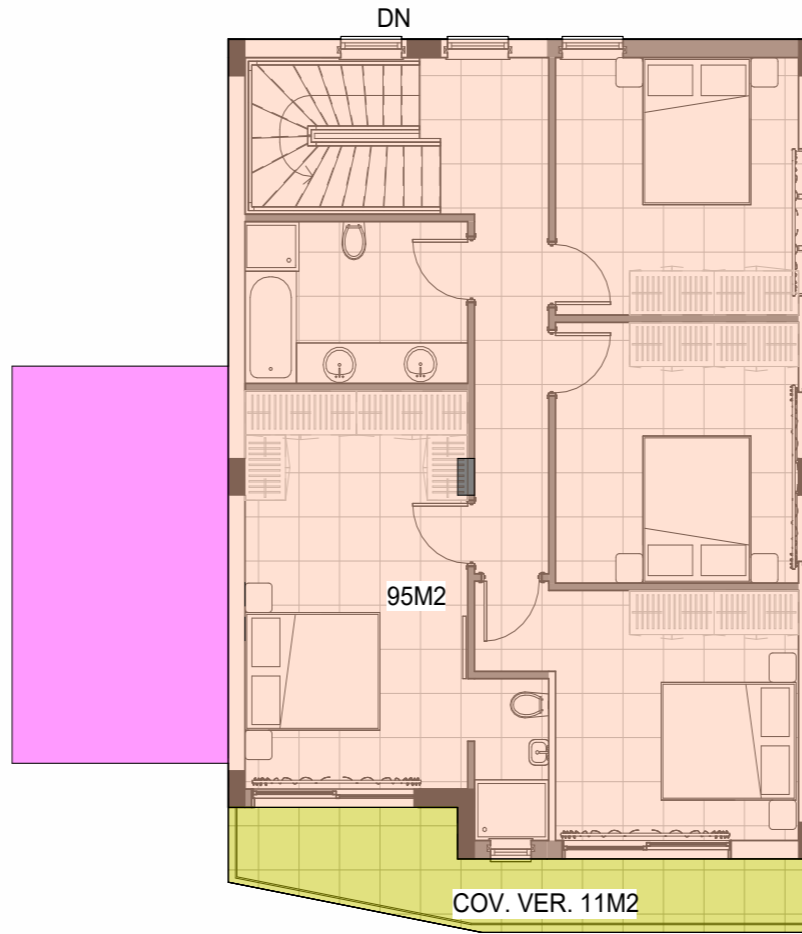


FIRST FLOOR PLAN

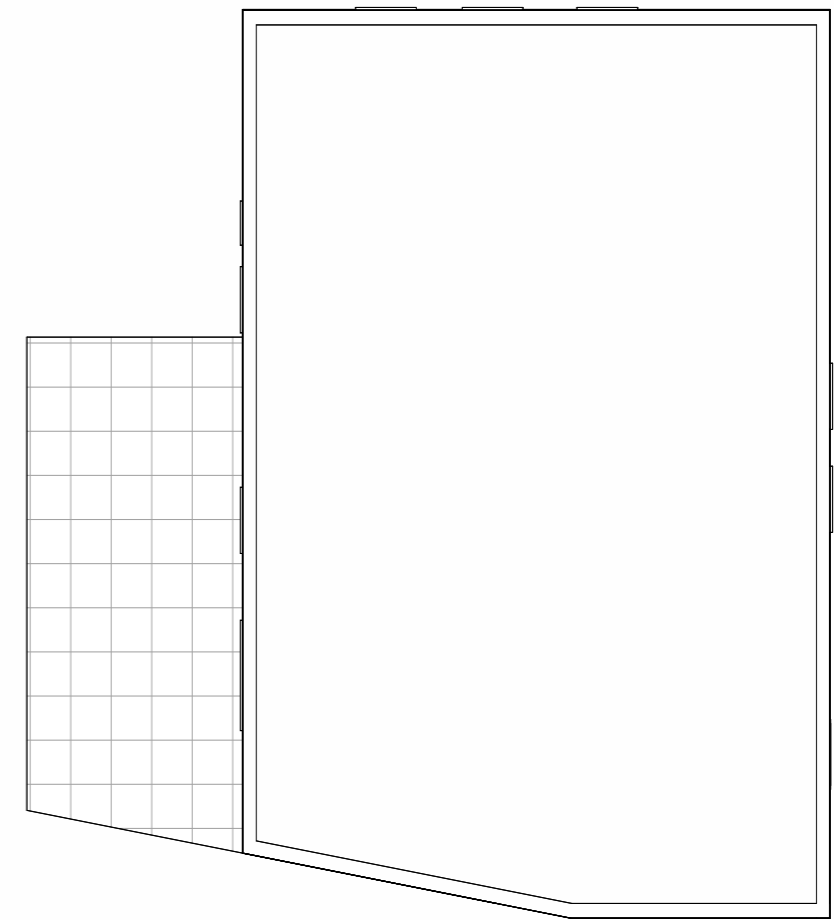
HOUSE 8



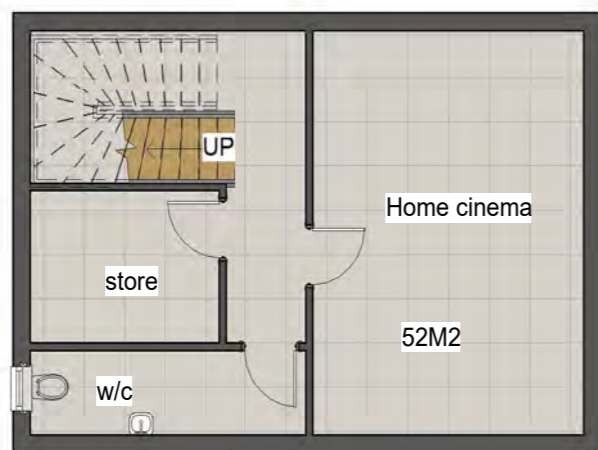
GROUND FLOOR PLAN



FIRST FLOOR PLAN



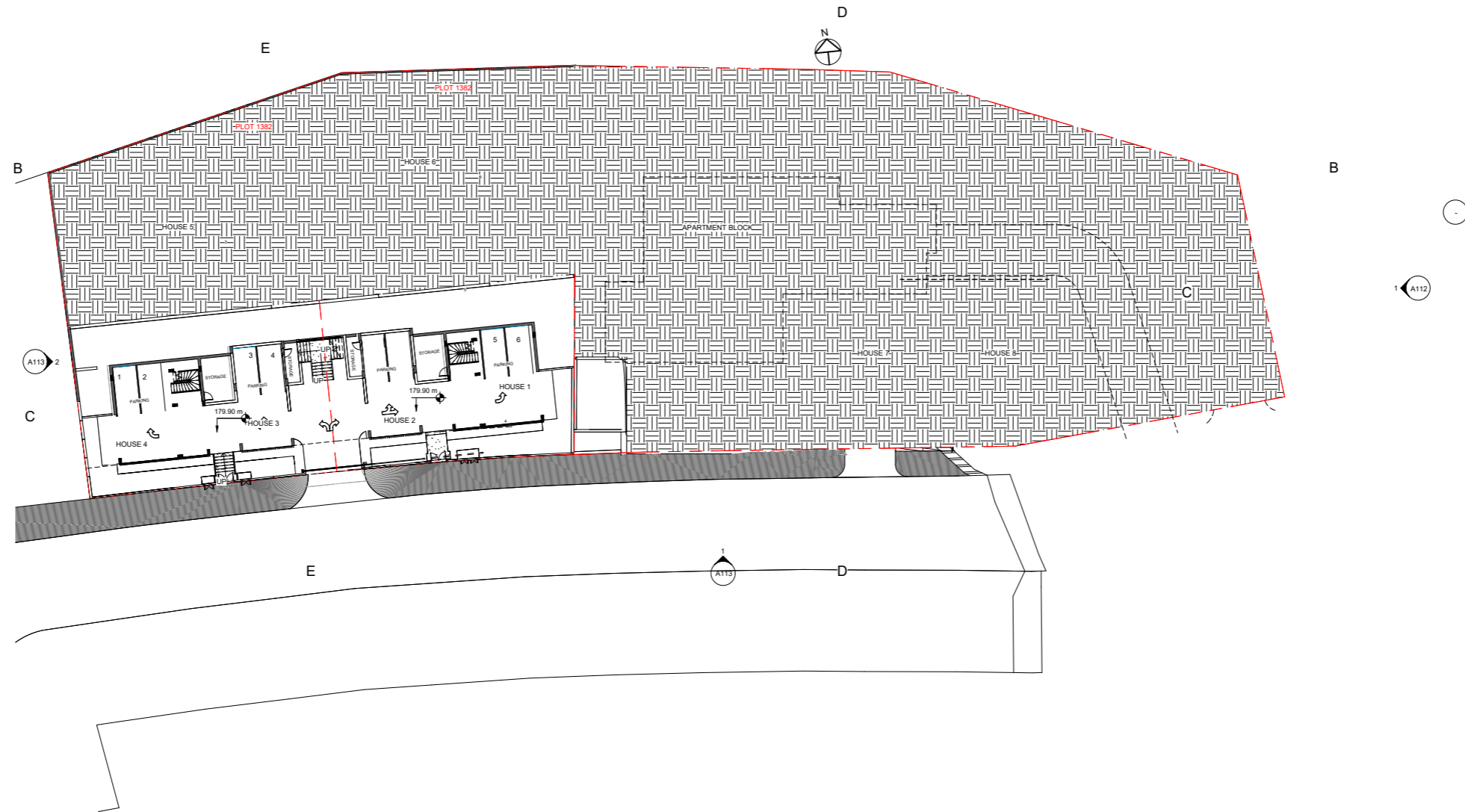
ROOF PLAN



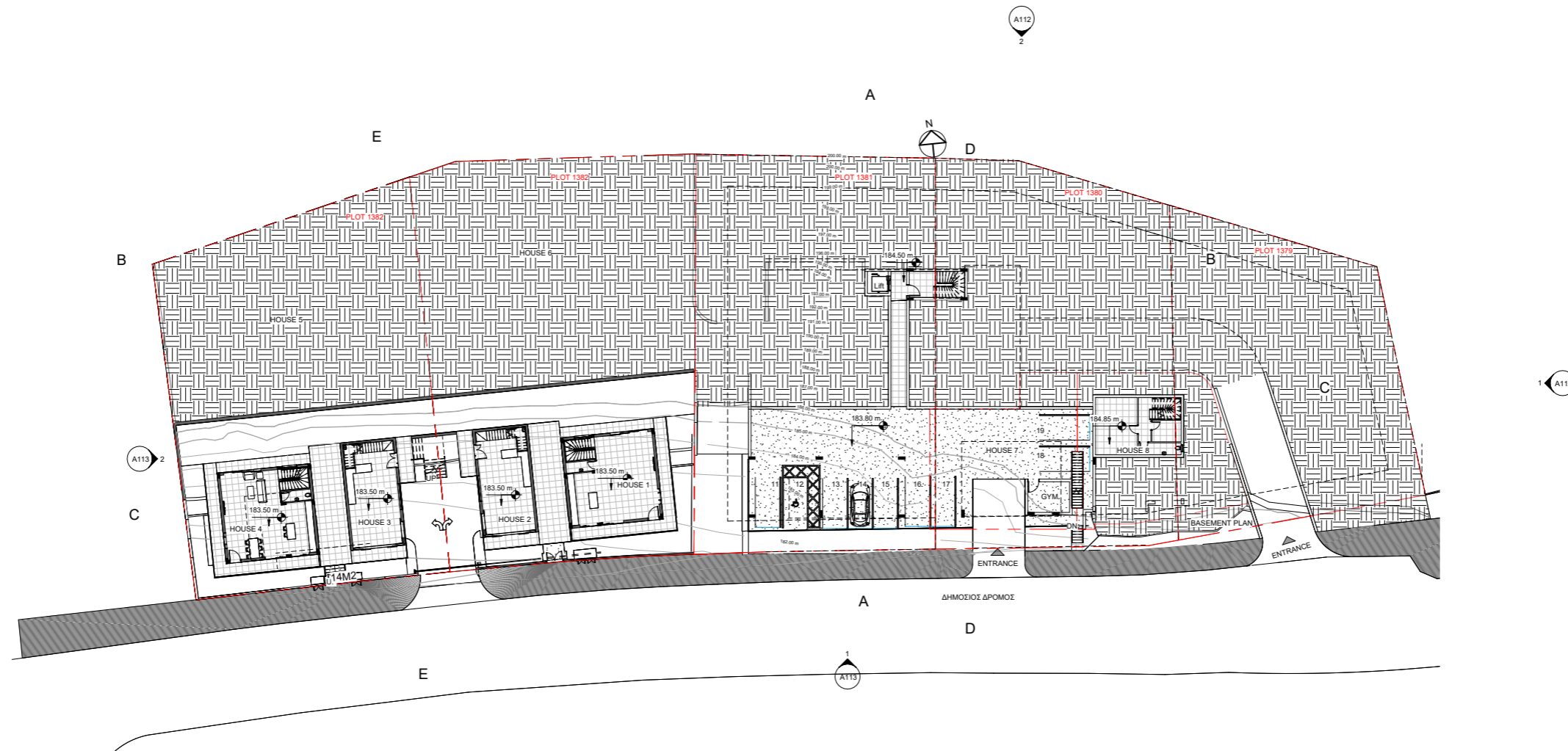
BASEMENT PLAN

1:100

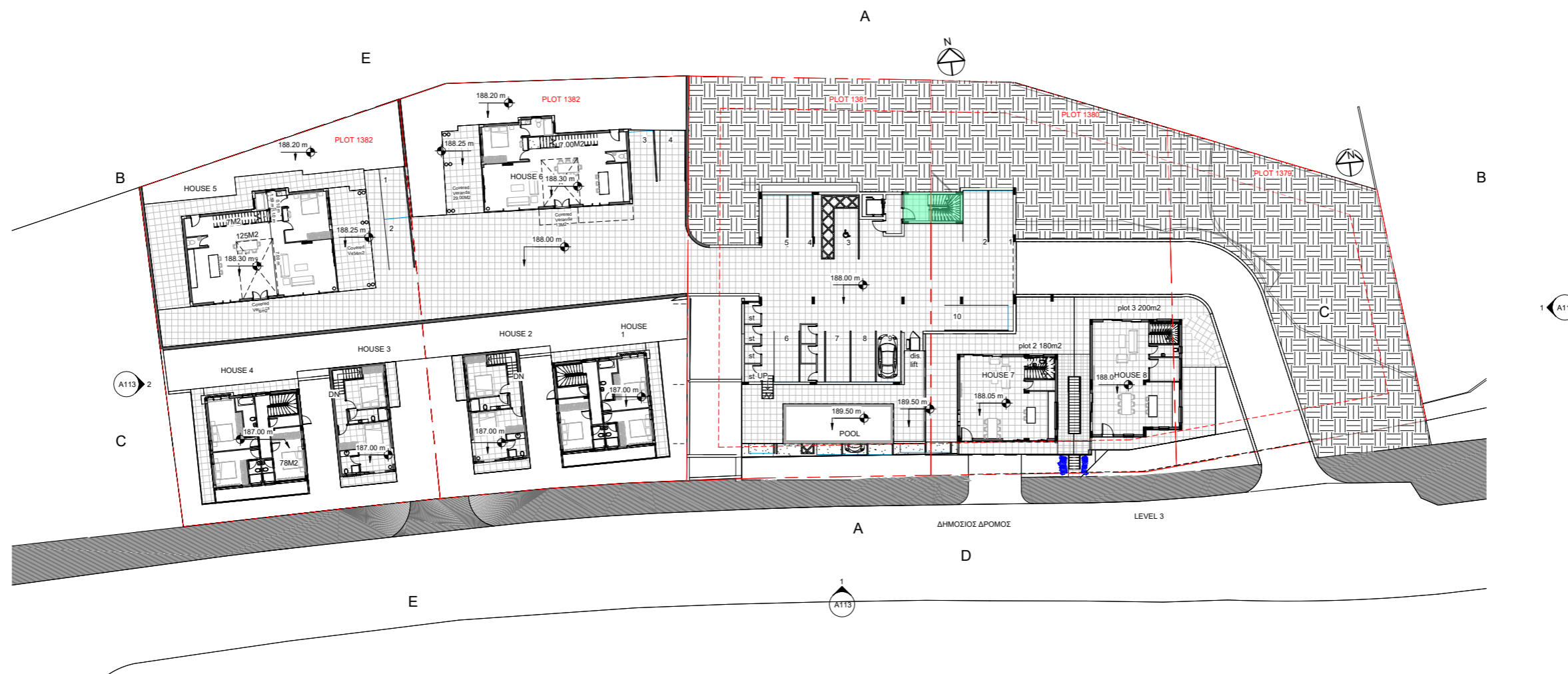
LEVEL 1



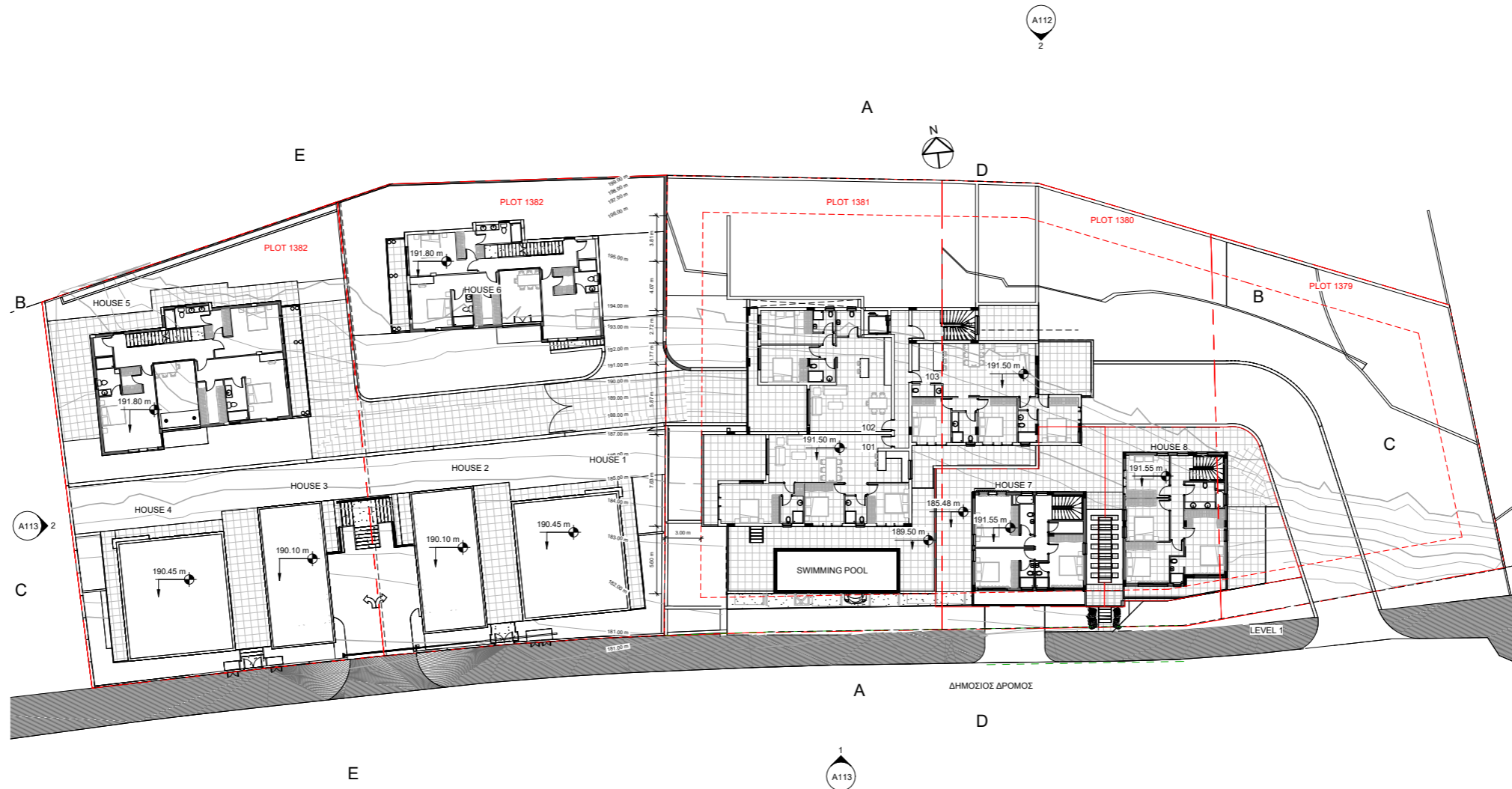
LEVEL 2



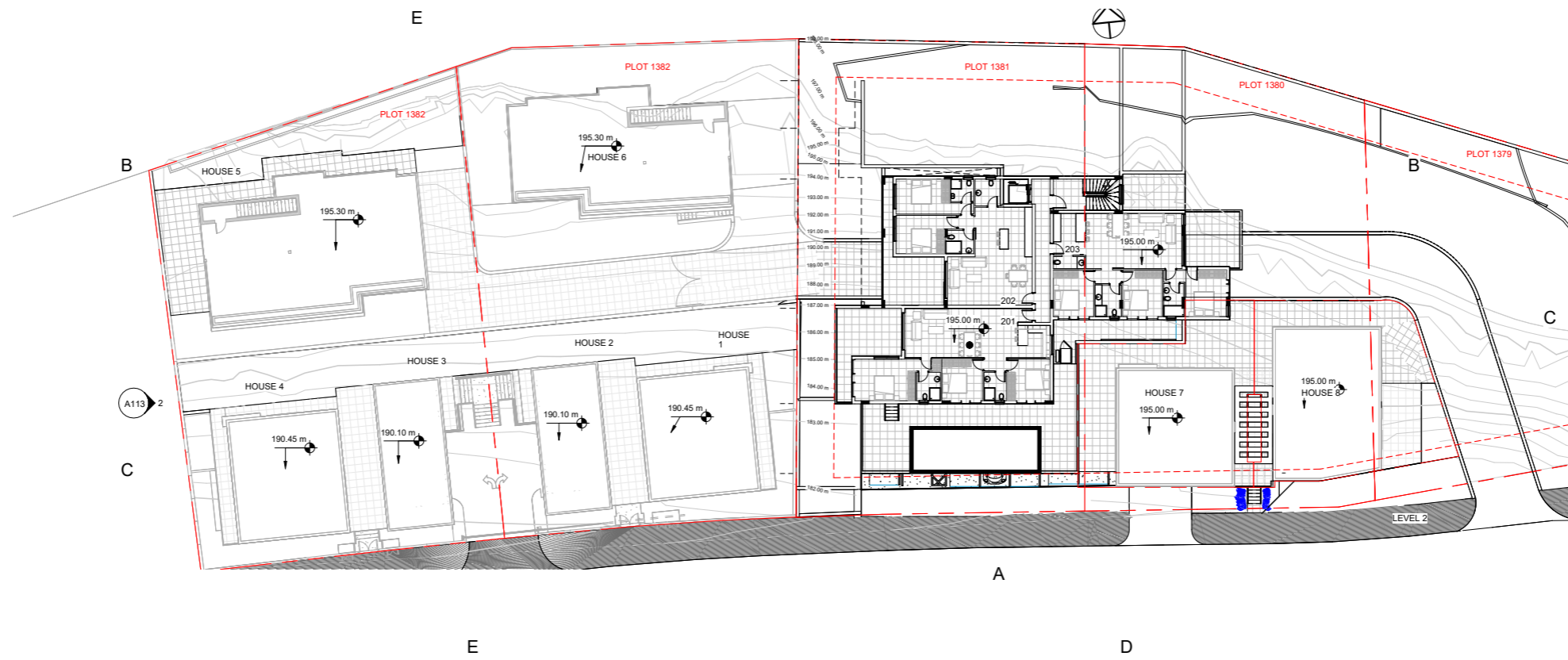
LEVEL 3



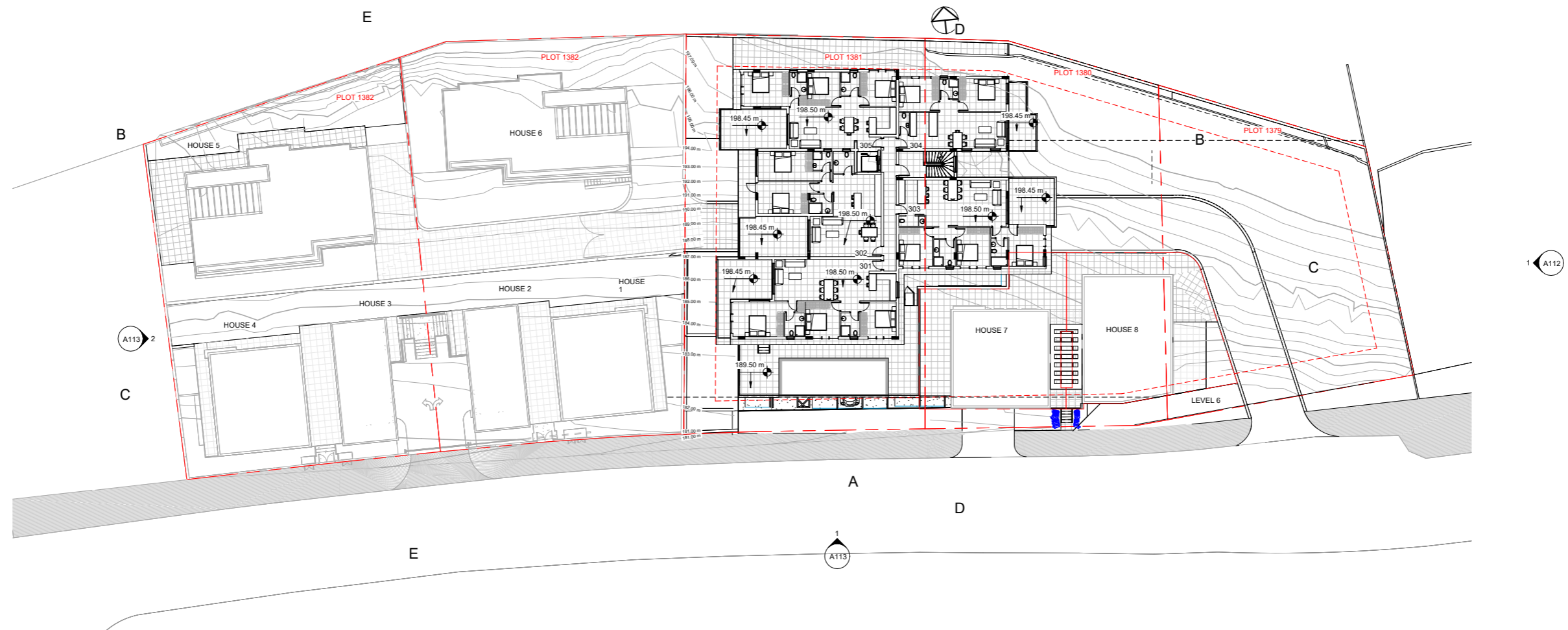
LEVEL 4



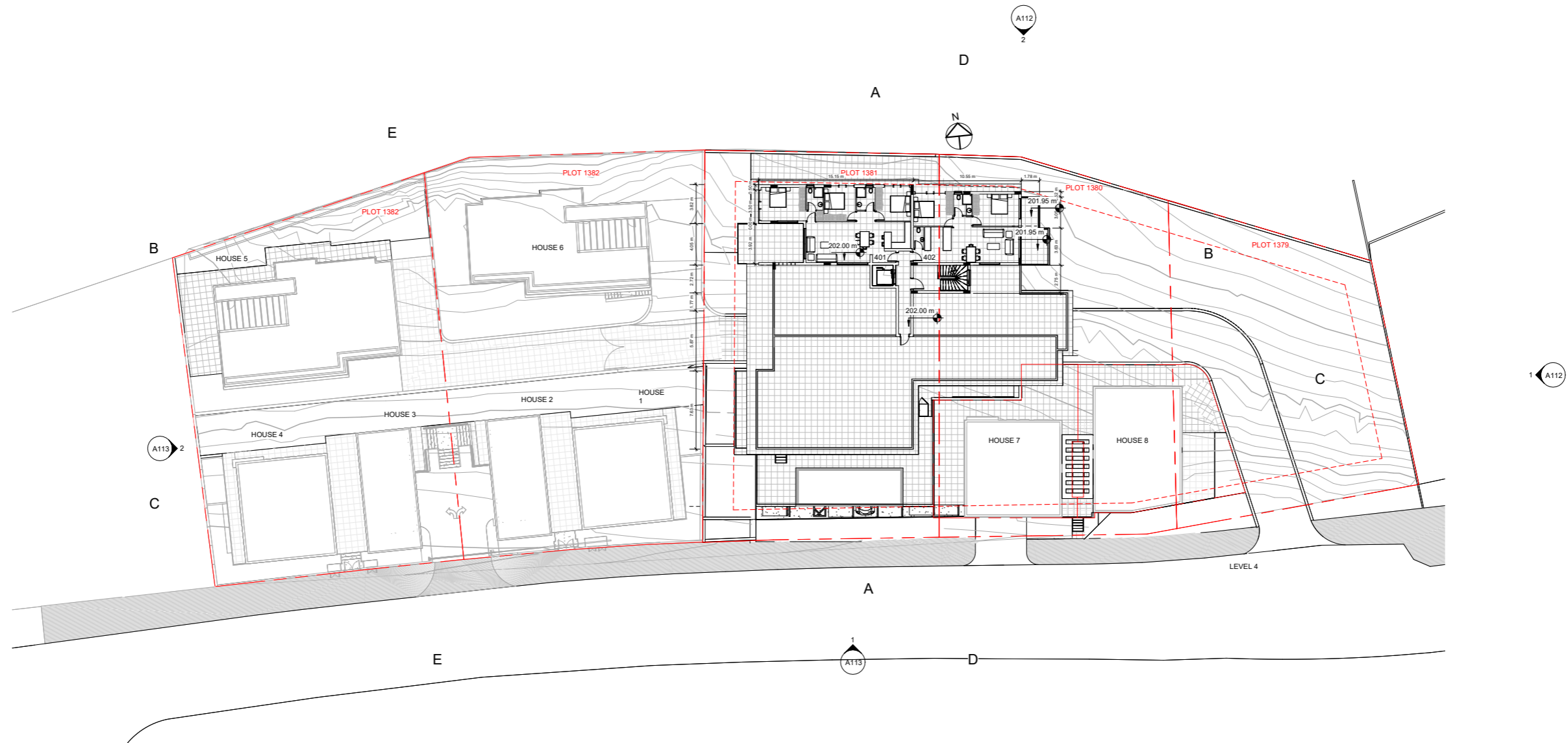
LEVEL 5



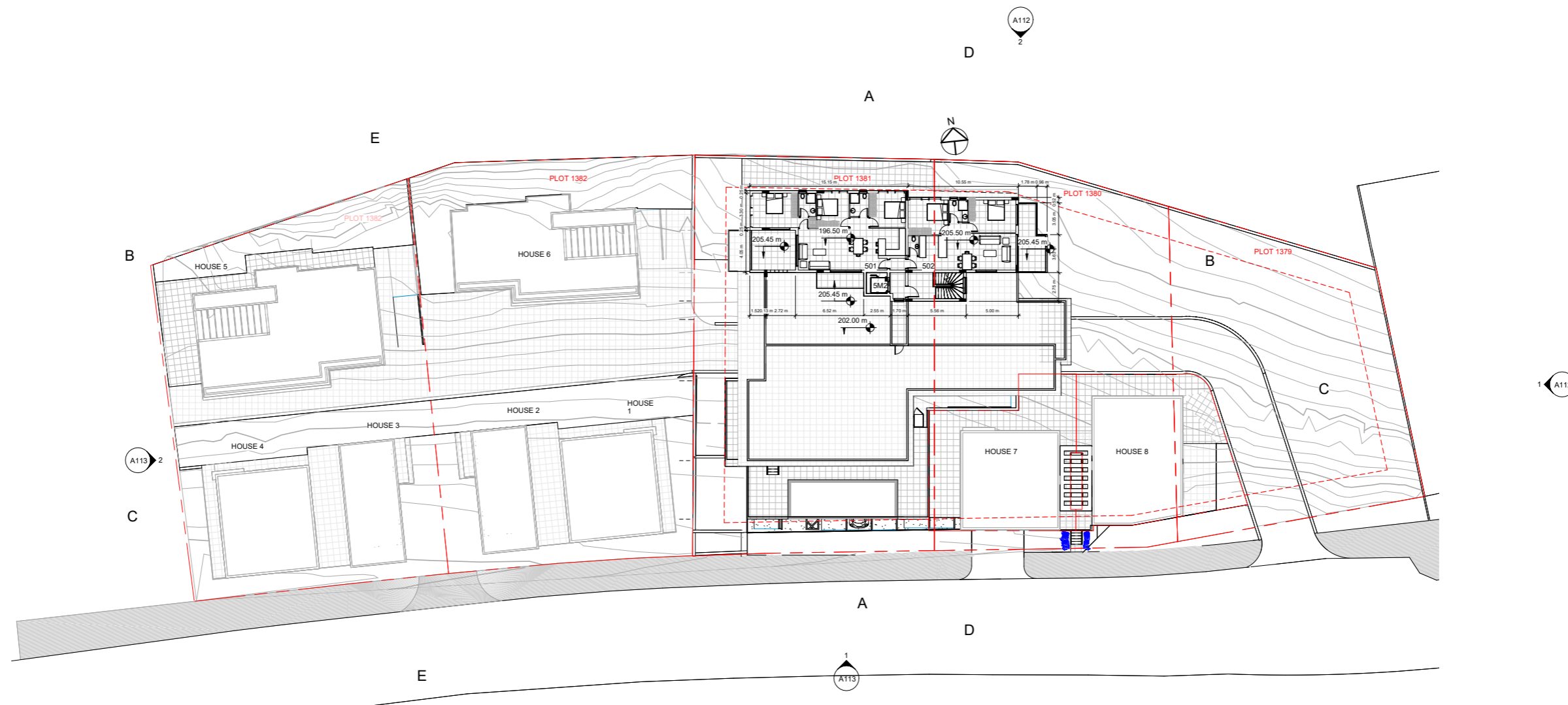
LEVEL 6



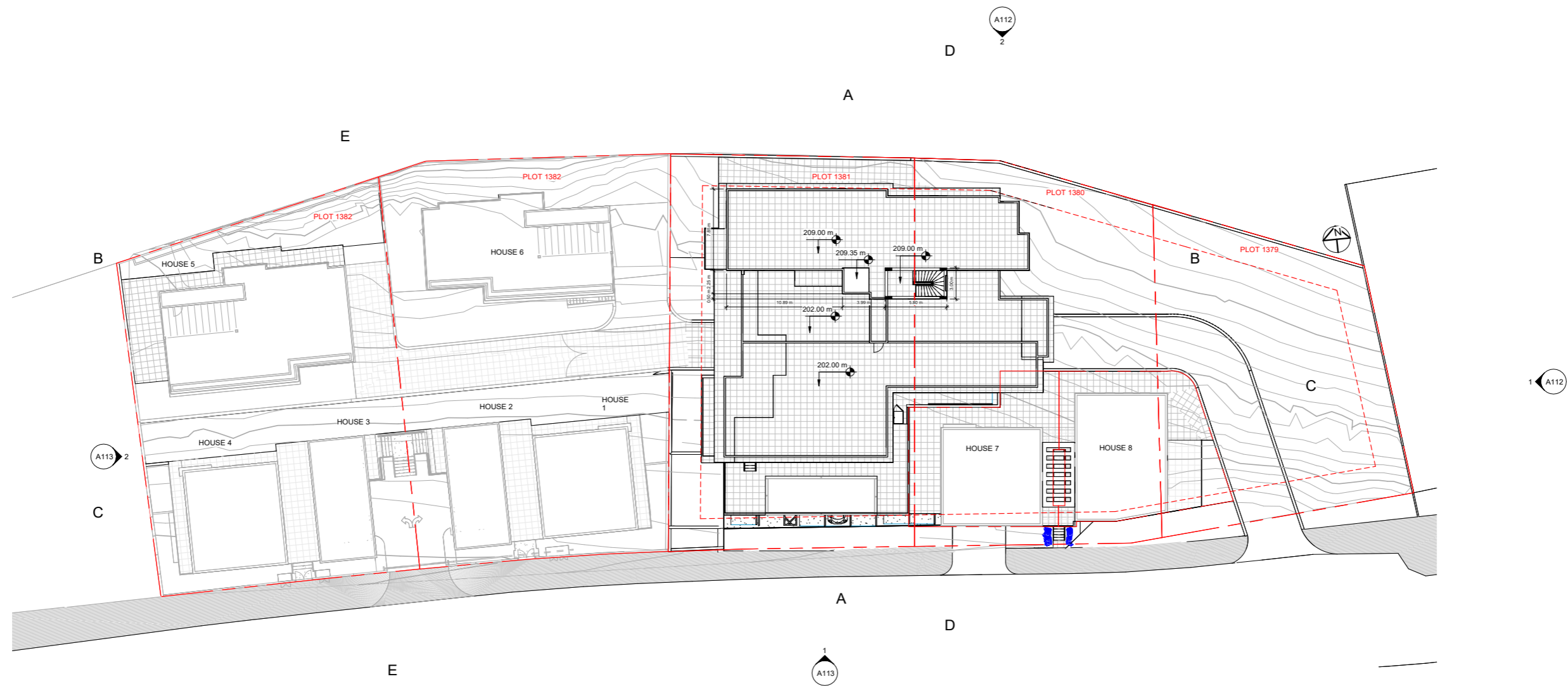
LEVEL 7



LEVEL 8



LEVEL 10



KALEIDE

Build your dream

Kaleide Property Group is a real estate development company based in Cyprus with an impressive portfolio of ground-breaking projects.

Through its **SMART** property package, Kaleide offers affordable elegance accessible for family living or for long-term investment while through its **SELECT** package, it boasts a selection of properties, addressed to the high-end buyer.

With a focus on the transparency of the procedure, Kaleide offers premium residential and commercial properties for discerning clients. We work openly and with transparency with all our partners, promoting an inclusive and diverse brand strategy and aim to promote better living for all through sustainable and smart projects with a flair for high aesthetics.

Our team's combined experience enables us to be local experts with global industry knowledge, transforming Cyprus's property market and creating a new approach for real estate.




AFFORDABLE ELEGANCE





PREMIUM ELEGANCE

CONTACTS

 www.kaleidegroup.com

 +357 25 100 688

 info@kaleidegroup.com

 Leoforos Amathountos 2, Sun City Beach Complex
Shop 1-2, 4531, Mouttagiaka Limassol

